



SAINT LUCIA

MINISTRY OF AGRICULTURE, LANDS, FISHERIES
AND FORESTRY

**ANNUAL AGRICULTURAL
STATISTICAL DIGEST**

1991

AAD. Vol. No. 9

PRICE \$5.00

TABLE OF CONTENTS

	PAGE NO.
FOREWARD	1
EXPLANATORY NOTES TO THE TABLES	ii - iv
THE AGRICULTURAL SECTOR	
TABLE I - 1. Gross Domestic Product at Factor Cost Constant Prices (1985) (R)	1
I - 2. Total Domestic Exports and Agricultural Exports	3
METEROLOGICAL OBSERVATIONS	
II - 1. Average Monthly Minimum and Maximum Temperatures	5
II - 2. Temperature, Relative Humidity, Wind and Evaporation Recorded at Union Agricultural Station	7
II - 3. Rainfall Data from Observation Stations (1987 - 1991)	8
II - 4. Rainfall Data from Observation Stations (1991)	9
AGRICULTURAL FINANCING	
III - 1. Number, Value, and Percentage of Agric. and Fishing Loans Approved by Type of Credit Scheme	10
III - 2. Loans Approved for Agricultural and Fishing Activities by Number, Value and Type of Activity	13

TABLES - Continued

THE BANANA INDUSTRY

IV - 1.	Banana Purchases and Exports	14
IV - 2.	Banana Production by Buying Depots	16
IV - 3.	Banana Price Structure	17
IV - 4.	Comparative Banan Exports by Quantity and Value (Windward Islands)	19
IV - 5.	Price Range of Banana Inputs - 1991	20
IV - 6.	Imports of Fertilizer by Type	21

THE COCONUT & COCOA INDUSTRY

V - 1.	Copra Deliveries to Principal Purcahser	22
V - 2.	Exports of Copra Products	24
V - 3.	Purchases and Exports of Cocoa Beans	25

DOMESTIC FOOD MARKETING

VI - 1.	Total Quantity of Selected Agricultural Produce Purchased (1987 - 1991)	27
VI - 2.	Total Quantity of Selected Agricultural Produce Purchased - 1991	29
VI - 3.	Wholesale Prices of Selected Agricultural Produce Purchased - 1991	31

THE LIVESTOCK SUBSECTOR

VII - 1.	Milk Production	33
VII - 2.	Estimated Livestock Slaughtered by Type of Stock	33
VII - 3.	Table Egg Production and Imports	35
VII - 4.	Imports of Livestock Feed	37
VII - 5.	Imports of Poultry Parts	38

TABLES - Continued

VII - 6.	Imports of Meats	39
VII - 7.	Imports of Selected Livestock Products	42

TRADE IN OTHER AGRICULTURAL COMMODITIES

VIII - 1.	Trade Balance on Food	43
VIII - 2.	Comparison of Exports of Selected Agricultural Produce (1987 - 1991)	45
VIII - 3.	Exports of Selected Agricultural Produce - 1991	46
VIII - 4.	Ginger Purchases and Exports	47
VIII - 5.	Comparison of Imports of Selected Agricultural Produce (1987 - 1991)	49
VIII - 6.	Imports of Selected Agricultural Produce - 1991	51
VIII - 7.	Composition of Food Import	52

THE FISHING INDUSTRY

IX - 1.	Estimated Summary of Fish Landed by District	53
IX - 2.	Estimated Summary of Fish Landed by Type	54
IX - 3.	Fish Exports (1987 - 1991)	55
IX - 4.	Fish Imports (1987 - 1991)	56

FIGURES

FIG. I - 1.	Comparison of Three Main Sectors Contribution to GDP	2
I - 2.	Domestic and Agricultural Exports	4
II - 1.	Annual Temperature Range	6
III - 1.	Number of Agricultural Loans Disbursed by Type of Activity	11
III - 2.	Value of Agricultural Loans Disbursed by Type of Activity	12
IV - 1.	Banana Purchases and Exports	15
IV - 2.	Banana Price Structure	18
V - 1.	Copra Purchases by Principal Purchaser	23
V - 2.	Exports of Cocoa Beans	26
VII - 1.	Milk Production	34
VII - 2.	Table Egg Production	36
VII - 3.	Imports of Meat (Quantity) - 1991	40
VII - 4.	Imports of Meat (Value) - 1991	41
VIII - 1.	Food Imports and Exports	44
VIII - 2.	Ginger Purchases	48
VIII - 3.	Imports of Selected Vegetables	50
IX - 1.	Fish Production, Imports and Exports	57

FOREWORD

The Agricultural Statistical Digest, a publication of the Statistical Unit of the Ministry of Agriculture is designed to provide information on Agriculture and Fishing.

This edition provide data specifically for the period January to December 1991. Data for the five year period 1987 to 1991 is furnished as well.

The Unit wishes to thank its sources, who so willingly supplied the data, and would welcome any criticisms or suggestions relating to the improvement of information in this publication.

EXPLANATORY NOTES TO THE TABLES

The Agricultural Statistical Unit advises its readers to carefully read the following notes before proceeding to the tables. The notes are intended to clarify the data as well as to acquaint readers with its sources of the data. It is therefore hoped that readers will be better equipped to interpret and use the data.

AGRICULTURAL FINANCING

Loans Approved for Agricultural and Fishing Activities

These figures are obtained from the St. Lucia Development Bank (SLDB). They relate to the number of loan applications which the SLDB has approved during each period. It should be noted that not all the funds are disbursed by the SLDB during the same period which the loans were approved.

THE BANANA INDUSTRY

The figures published for banana production represents total quantity of bananas purchased by the St. Lucia Banana Growers Association (SLBGA) from banana producers.

These quantities purchases account for an estimated 90 - 95% of the islands total production and are exclusively for exports mainly to the United Kingdom, varying amounts maybe "left back" on the ship docks.

THE COCONUT INDUSTRY

Copra is delivered from an estimated 85% of the island's total production of coconut, and is purchased in bulk solely by the St. Lucia Coconut Growers Association (SLCGA). This association sell all the copra purchased to the Copra Manufacturers Limited (CML), represents all the island's production, therefore copra is not exported. However, a few coconuts are exported in the green (water nuts) and dried forms.

THE COCOA INDUSTRY

Data on cocoa beans are collected from the sole exporter of the crop - the St. Lucia Agriculturalist Association (SLAA). This exporter also supplies cocoa beans to local private individuals for domestic and commercial purposes from time to time. Purchases of cocoa beans by SLAA represents an estimated 90% of the island's cocoa beans production. Exports of cocoa beans are mainly to Europe, the United Kingdom and the United States of America.

DOMESTIC FOOD MARKETING

Presently, data concerning quantities and prices of domestic agricultural produce are obtained from the St. Lucia Marketing Board (SLMB) and the leading supermarkets on a regular basis. The produce price is the price the farmer/producer receives for his or her produce at the various marketing outlets.

LIVESTOCK SUBSECTOR

Table egg production data are obtained from the St. Lucia Association of Farmers Co-operatives (STAFCO) and sourced from an estimated 100 poultry farms islandwide. These farms are monitored on a monthly basis by the Livestock Department of the Ministry of Agriculture.

The table egg production data does not include backyard production or subsistence farming. All eggs produced are consumed locally and local demand is supplemented by imports. The importation of table egg is handled solely by the SLMB.

TRADE IN OTHER AGRICULTURAL COMMODITIES

Ginger

The main exporter of ginger - the St. Lucia Marketing Board (SLMB), purchases the crop for exporting mainly to the United Kingdom. The ginger is graded into two categories - grade 1 and grade 2. On an average, grade 1 comprises 75 - 80% of the total quantity purchased and fetches a price of almost twice that of grade 2.

The harvesting season for ginger commences in January and ends in April. Purchases by SLMB represents an estimated 80 - 90% of the island's total production of ginger.

THE FISHING INDUSTRY

These figures relate to the estimated total amount of fish landed at the various fishing districts. Fish landings are monitored daily at the various fishing districts by the Fisheries Management Unit (FMU) of the Ministry of Agriculture. The fishing season extends from January to June and there are an estimated 40 boats on the island with only 60% of them registered with the FMU.

An ongoing programme is established for boat registration with the Fisheries Co-operatives, and is done voluntarily by fishermen in order to obtain duty-free concessions as well as duty refund on gasoline.

NOTES

1. Symbols used in this digest.

... - Nil or Negligible

N.A./(-) - Not available

R - Revised

P - Provisional

2. The figures in most tables are round off to the nearest final digit. Additions of those rounded off figures may not always agree exactly with the rounded off totals shown in the tables.

3. All values are in Eastern Caribbean (EC) dollars; EC\$2.71 equals US\$1.00

4. All trade data (i.e. import and export) for the 1991 period are provisional.

Table I - 1. Gross Domestic Product at Factor Cost
Constant Prices (1985) (R)

Sector	Million E.C\$				
	1987	1988	1989	1990	1991
Agriculture	76.8	101.5	97.1	102.5	88.2
Mining & Quarrying	2.5	3.5	5.0	4.0	4.2
Manufacturing	51.9	59.8	63.8	62.0	59.0
Construction	39.3	52.1	57.2	48.6	56.0
Electricity & Water	17.9	20.7	20.4	23.4	25.2
Wholesale & Retail Trade	92.6	100.5	105.9	114.1	114.8
Hotels & Restaurants	45.3	46.4	50.4	53.7	60.3
Transport	74.7	79.2	81.8	89.6	93.7
Communication	27.5	32.9	32.8	39.2	41.3
Banking & Insurance	44.7	51.5	59.3	63.0	64.0
Real Estate Etc	28.5	29.4	30.2	31.1	32.5
Government Services	79.2	77.0	84.0	85.8	87.1
Other Services	21.2	23.9	25.6	27.2	30.1
Less Imputed Banking Service Charge	28.7	35.6	41.1	45.1	45.6
Total	573.4	642.8	672.4	699.1	710.8

Source : Government Statistics Department

COMPARISON OF THREE MAIN SECTORS CONTRIBUTION TO G.D.P.

Fig. I - 1

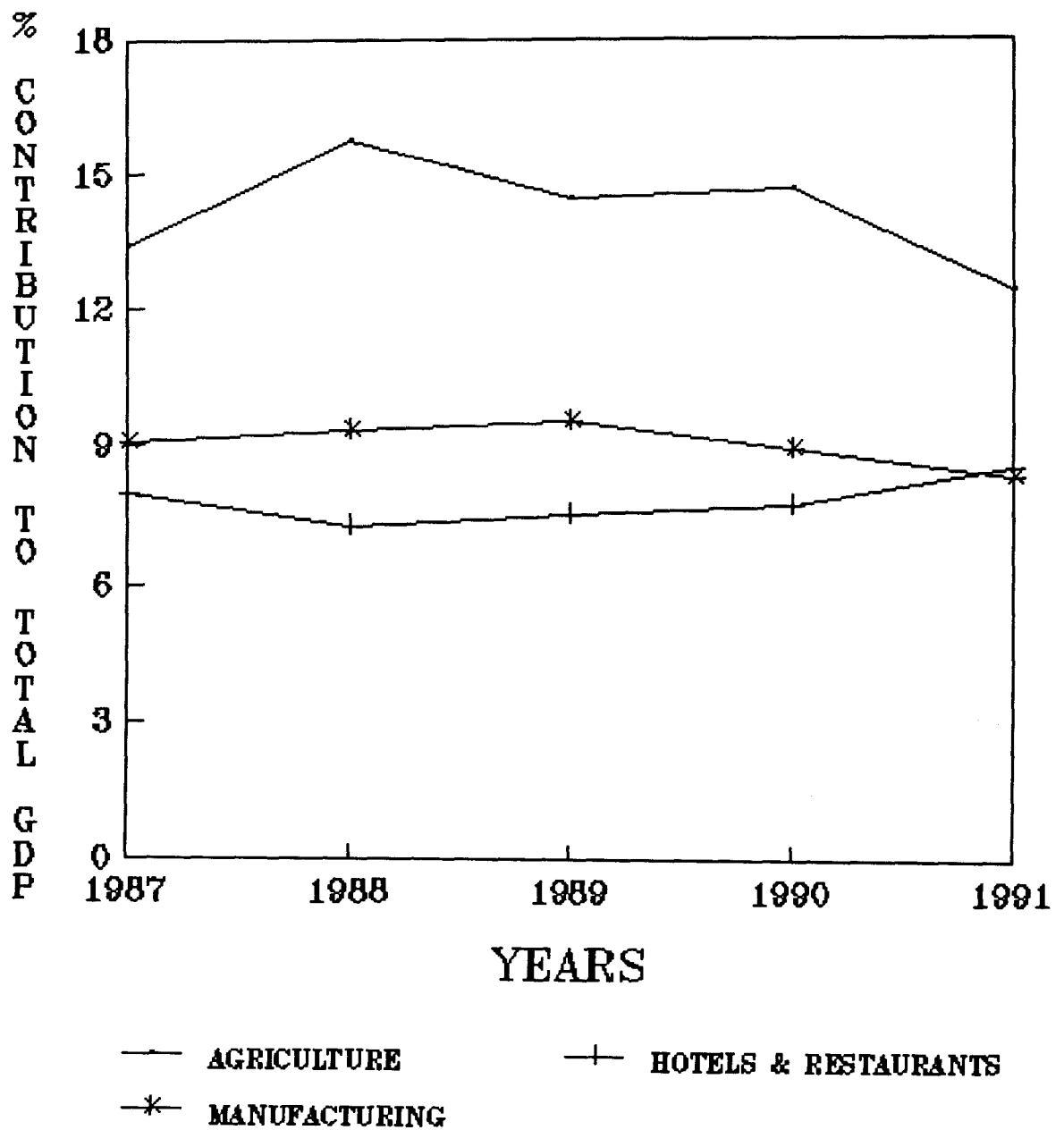


Table I- 2. Total Domestic Exports and Agricultural Exports (\$'000)

Period	Total Domestic Export (1)	Total Agricultural Export (2)	Banana Export (3)	2 as a % of 1	3 as a % of 2
1987	207021	125031	120093	60	96
1988	300012	191442	183502	64	96
1989	279143	168241	163051	60	97
1990	312808	194468	188877	62	97
1991 1st Quarter	66102	38952	37993	59	98
2nd Quarter	74442	48346	46589	65	96
3rd Quarter	64891	37518	36161	58	96
October	16647	7928	7519	48	95
November	18417	11259	10638	61	94
December	18295	9275	8915	51	96
4th Quarter	53359	28462	27072	53	95
Total 1991	258794	153278	147815	59	96

Source : Foreign Trade Report

DOMESTIC AND AGRICULTURAL EXPORTS 1987 - 1991

Fig. I - 2.

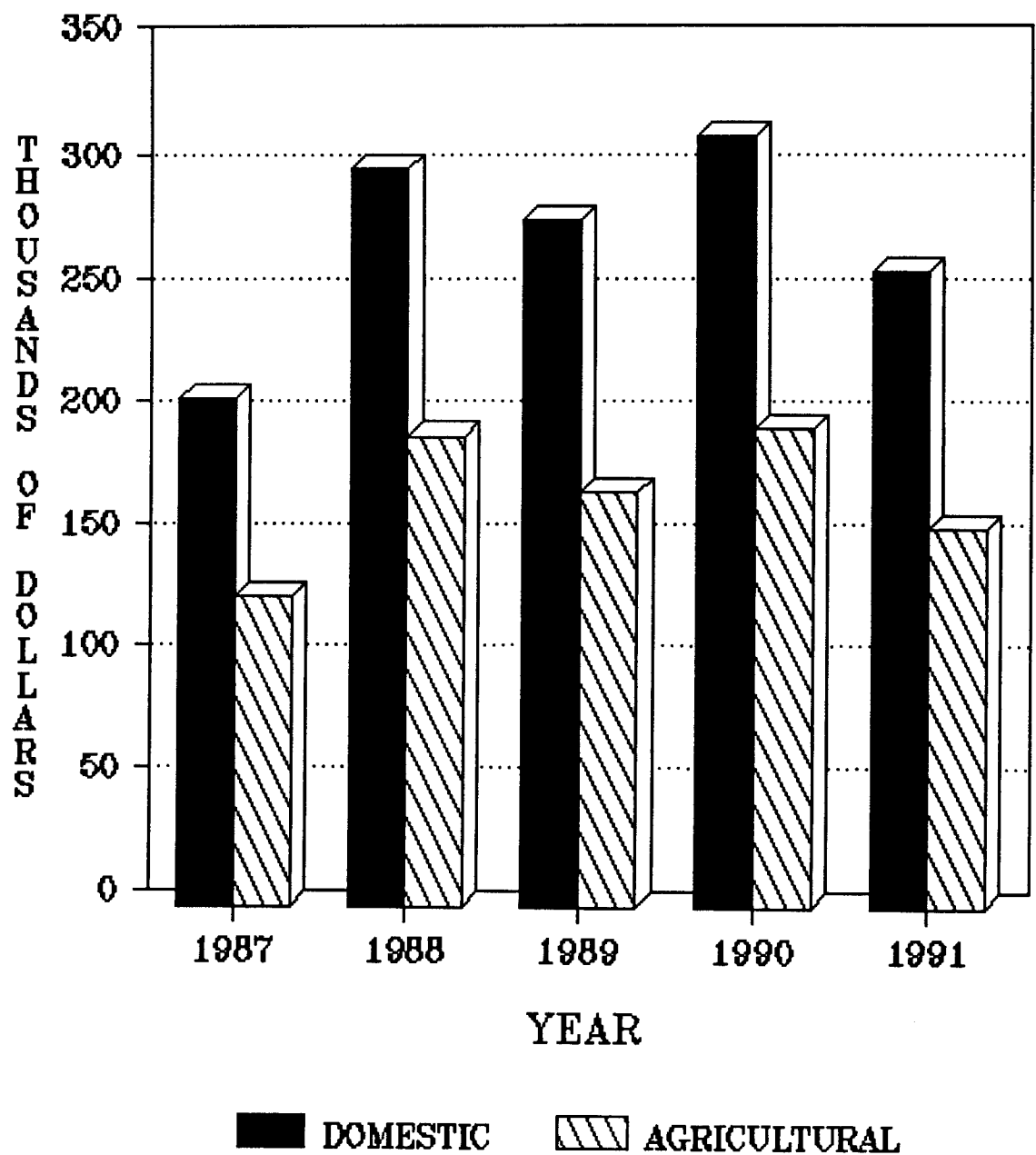


Table II - 1. Average Monthly Minimum and Maximum Temperature 1/
(degrees celsius)

Month	1987		1988		1989		1990		1991
	Min	Max	Min	Max	Min	Max	Min	Max	Min
January	21.5	28.8	22.5	29.3	20.4	28.9	22.7	28.7	22.7
February	20.9	29.0	22.7	29.0	19.0	28.6	21.6	28.4	22.1
March	20.2	30.0	22.5	29.6	19.2	28.7	22.6	28.9	22.3
April	23.8	31.1	23.2	30.1	17.0	...	22.7	29.7	23.6
May	23.6	31.1	24.8	30.8	18.2	...	25.0	30.1	24.3
June	25.2	30.7	25.0	30.9	20.0	...	24.5	30.2	23.6
July	25.5	29.6	23.9	30.8	19.5	30.6	24.7	30.3	22.9
August	25.1	31.0	24.2	30.4	18.1	31.0	23.5	30.9	22.1
September	24.2	30.9	24.1	30.7	18.3	31.0	24.1	31.5	21.8
October	23.9	31.2	23.8	30.4	...	31.1	23.6	31.3	22.5
November	23.5	30.8	24.1	30.1	24.0	30.1	22.9	29.9	22.5
December	24.5	30.4	22.9	29.2	22.5	29.3	21.4	28.6	20.4
Yearly Average	23.5	30.4	23.6	30.1	19.7	29.9	23.3	29.9	22.6

Source: Engineering Division, Ministry of Agriculture

1 - Data recorded at Union Agricultural Station

ANNUAL TEMPERATURE RANGE

Fig. II - 1

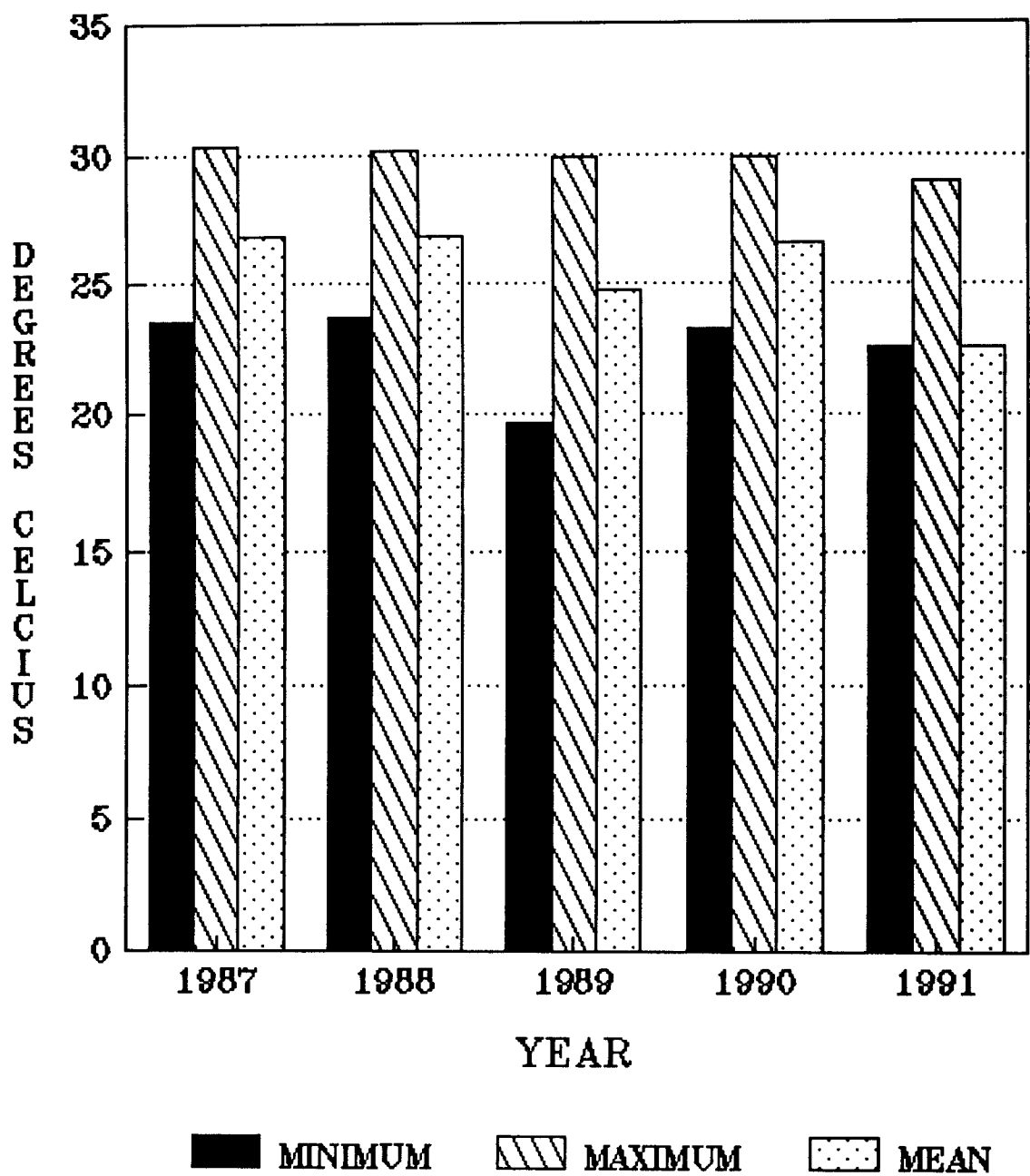


Table II - 2. Temperature, Relative Humidity, Wind and Evaporation Recorded at Union Agricultural Station

Year	Mean Temperature (degrees Celcius)			Mean Relative Humidity (%)	Mean Evaporation (mm) 2/
	Max	Min	Mean		
1987	30.4	23.5	26.9	76	4.8
1988	30.1	23.6	26.9	75	4.6
1989	29.9	19.7	24.8	77	5.2
1990	29.9	23.3	26.6	77	4.5
1991 1st Quarter	27.9	22.4	25.2	74	4.7
2nd Quarter	29.2	23.8	26.5	73	5.3
3rd Quarter	30.0	22.3	26.2	75	4.7
October	29.9	22.5	26.2	72	4.1
November	29.4	22.5	26.0	81	2.5
December	27.9	20.4	24.2	73	3.7
4th Quarter Average	29.1	21.8	25.4	75	3.4
Average 1991	29.0	22.6	25.8	74	4.5

Source : Engineering Division - Ministry of Agriculture

1 - Mean Evaporation per Day.

Table II - 3. Rainfall Data from Observation Stations (mm)

Stations	1987	1988	1989	1990	1991
Marquis Estate	2351.1	1898.7	2063.3	1872.9	1435.7
Marquis, Babonneau	2378.6	1636.6	1790.5	180.1	N.A
Trouya	1896.5	1753.4	1651.9	1665.7	1452.1
Union	2491.8	2233.3	2090.2	2115.3	1876.8
George V Park	1080.4	1495.8	1488.6	2110.1	825.0
Government House	1301.6	1333.6	1472.7	2295.2	1658.7
Roseau, Winban	2322.0	2264.3	2030.2	2209.2	1516.6
Barre D'isle	2828.1	2661.1	2447.2	2496.5	2095.7
La Caye	2308.1	1806.9	1937.9	1886.5	1345.7
Mamiku	1860.1	1731.6	1973.7	1687.6	1318.0
Patience	1937.0	1980.1	479.0	1909.6	1557.7
Mahaut	2457.1	2972.3	3163.9	2813.4	2301.0
Beausejour	N. A.	N. A.	1685.8	1591.8	1096.9
Bath Nursery	2339.7	3275.8	2959.4	2474.1	2303.7
Union Vale	1574.8	2269.1	1979.4	1905.3	2007.3
Edmond Forest	3601.3	2587.1	3028.9	3622.2	2716.2
Troumassee	1586.7	1671.2	1380.2	1665.3	1217.6
Hewannora Airport	1312.5	1346.6	1888.9	976.3	943.8

Source : Engineering Division, Ministry of Agriculture

Table II - 4. Rainfall Data from Observation Stations - 1991

Stations	Jan	Feb	Mar	Apr	May	June	July	Aug	Sept	Oct	Nov	Dec	Total
Marquis Estate	126.9	32.9	67.6	88.3	45.6	75.9	106.8	140.0	210.4	79.1	387.5	74.7	1435.7
La Caye	78.3	49.5	67.7	136.3	69.5	24.8	109.1	159.1	190.3	107.2	353.9	...	1345.7
Trouya	100.5	44.8	64.7	76.0	69.0	175.9	99.8	73.9	175.0	48.2	454.6	69.7	1452.1
Union	142.6	65.0	93.1	71.0	84.3	163.2	114.9	126.2	189.6	149.6	565.0	112.3	1876.8
George V Park	146.3	48.3	94.9	79.3	78.8	140.5	114.2	122.7	825.0
Government House	146.3	61.4	109.6	74.7	66.4	157.3	119.0	153.4	196.5	102.5	471.6	...	1658.7
Roseau, Winban	199.8	82.9	60.9	73.5	92.2	268.2	102.5	511.5	125.1	1516.6
Barre D'Isle	129.6	92.6	103.0	123.6	120.5	82.6	149.4	238.5	257.6	134.3	521.4	142.6	2095.7
Mamiku	95.5	67.3	68.1	81.9	63.2	41.3	143.8	137.9	154.9	71.7	392.4	...	1318.0
Patience	98.4	82.0	73.2	110.7	64.0	43.4	146.3	132.5	192.6	84.8	476.6	53.2	1557.7
Errard Estate	174.2	74.7	117.8	86.8	81.2	62.0	182.5	195.2	275.1	129.2	451.4	85.5	1915.6
Mahaut	197.3	89.5	142.3	150.3	93.8	125.6	196.6	166.4	230.6	92.9	673.6	142.1	2301.0
Barthe Nursery	265.4	94.7	103.0	105.8	71.6	125.8	199.1	214.7	246.1	101.0	619.3	157.2	2303.7
Union Vale	158.9	525.3	50.1	48.3	40.7	152.3	140.0	144.0	173.2	48.0	430.9	95.6	2007.3
Edmond Forest	241.4	141.6	195.1	191.8	127.1	191.3	214.1	254.6	174.2	155.1	716.3	113.6	2716.2
Troumassee	86.2	40.6	30.8	99.4	44.6	40.6	116.7	123.6	121.4	109.5	354.3	49.9	1217.6
Hewannora Airport	85.1	43.1	50.1	80.9	32.8	22.2	112.1	64.9	...	36.1	372.7	43.8	943.8
Cap Estate	62.4	41.1	69.3	109.9	46.0	42.4	59.2	86.0	162.2	36.7	442.0	57.1	1214.3
Beausejour	85.5	41.6	71.2	75.4	27.8	30.1	102.0	83.8	77.4	54.0	400.0	48.1	1096.9
Vigie Airport	125.7	46.8	64.3	61.6	71.6	119.2	109.7	150.9	218.9	88.3	510.7	116.4	1684.1

Source : Engineering Division - Ministry of Agriculture

Table III - 1. Number, Value and Percentage of Agricultural and Fishing Loans Approved by Type of Credit Scheme

Type of Credit Scheme	CDB			FIC			SFAD			Local			Total		
	No.	\$'000	%	No	\$'000	%	No.	\$'000	%	No.	\$'000	%	No.	\$'000	%
1987	78	448	48	44	333	35	62	157	17	...	3	...	184	941	100
1988	92	1129	68	102	447	27	8	77	5	202	1653	100
1989	91	707	62	97	425	38	188	1132	100
1990	87	903	58	77	630	40	1	27	2	165	1560	100
1991	39	469	37	149	809	63	188	1278	100

Source: St. Lucia Development Bank

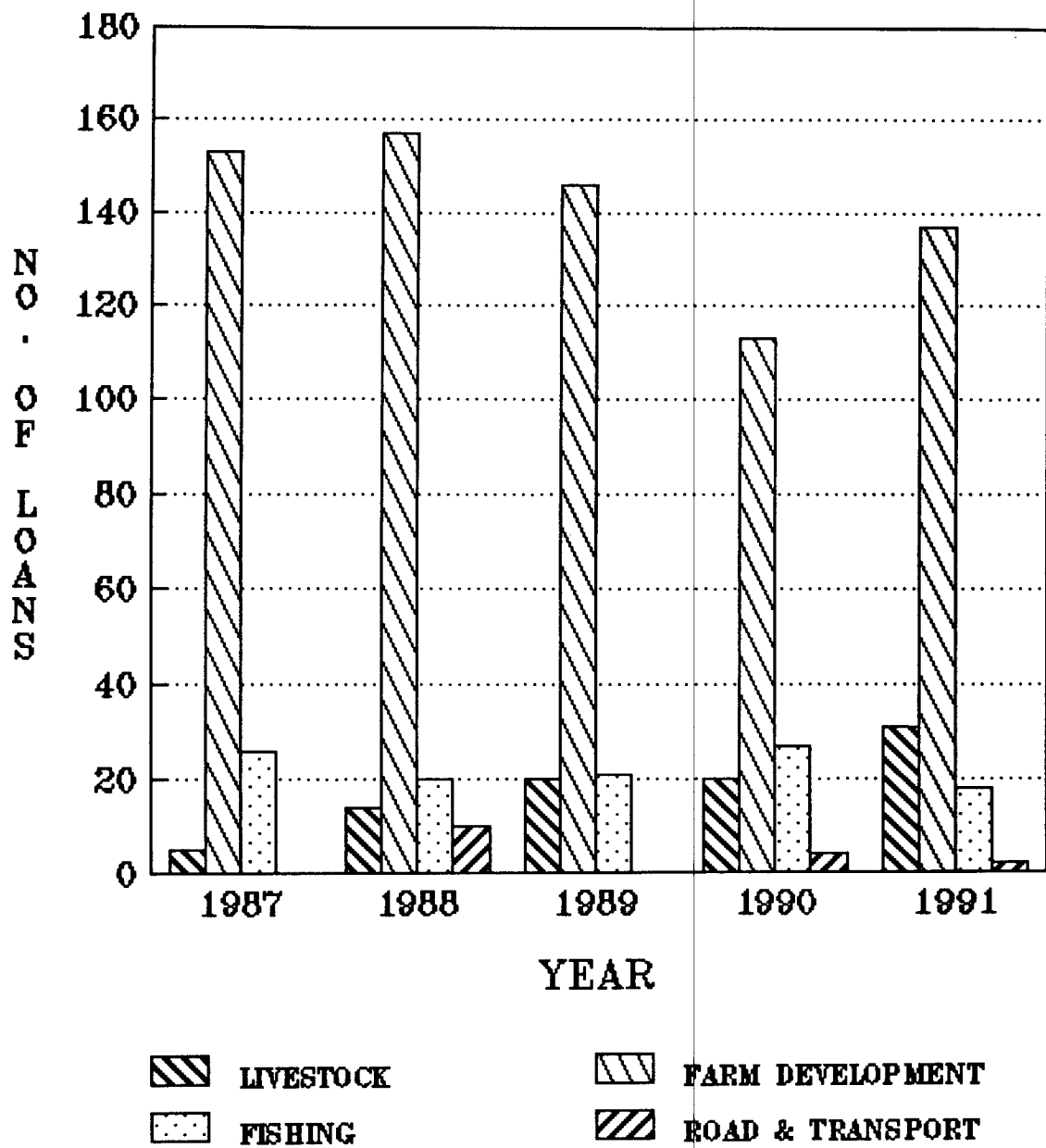
CDB:- Caribbean Development Bank

FIC:_ Farmer Improvement Credit

SFAD:- Small Farmer Agricultural Development

NUMBER OF AGRIC. LOANS DISBURSED BY TYPE OF ACTIVITY

Fig. III - 1



VALUE OF AGRIC. LOANS DISBURSED BY TYPE OF ACTIVITY - (EC\$)

Fig. III - 2

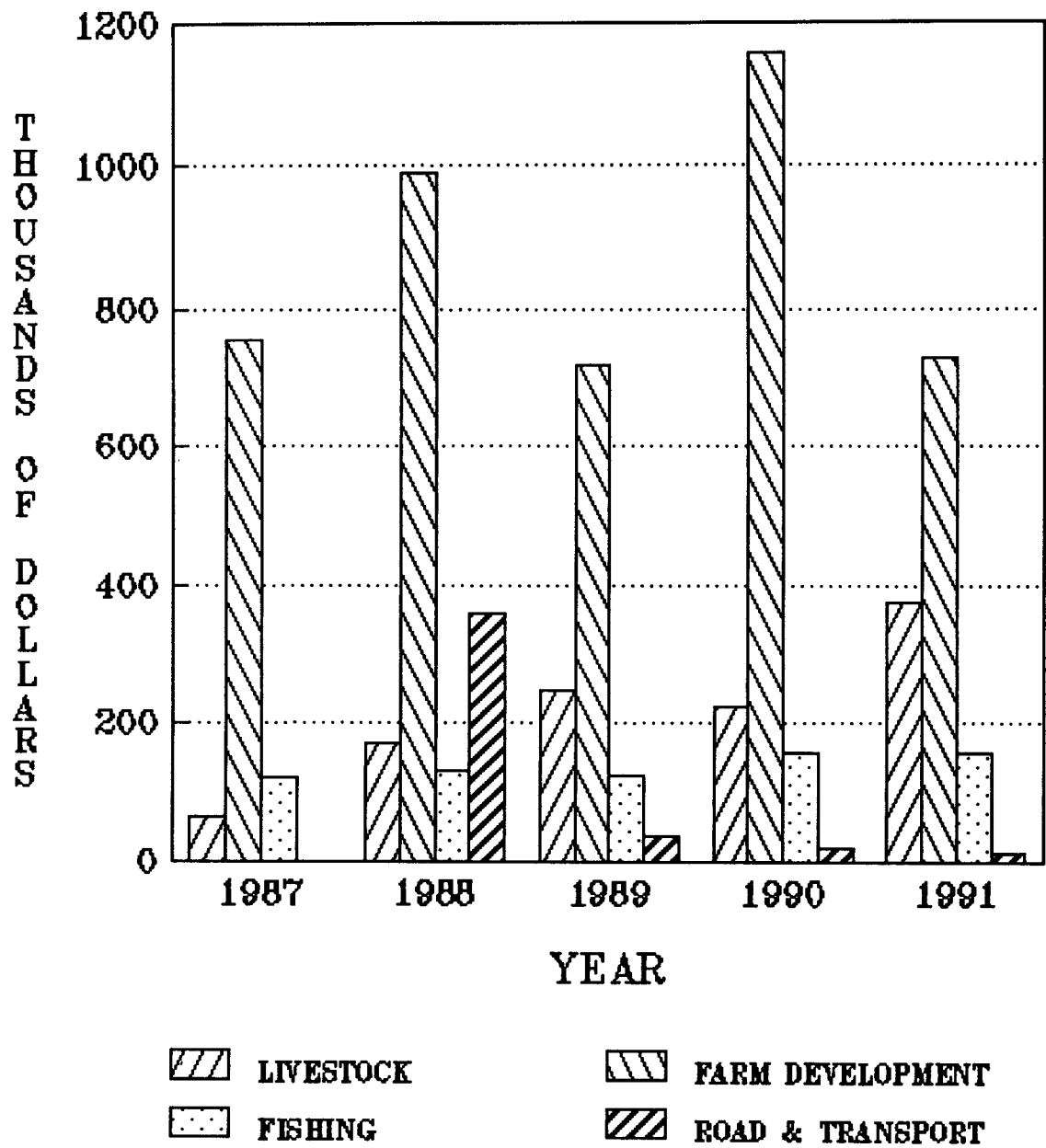


Table III - 2. Loans Approved for Agricultural and Fishing Activities by Number, Value and Type of Activity

Type of Activity	1987		1988		1989		1990		1991	
	No.	\$'000	No.	\$'000	No.	\$'000	No.	\$'000	No.	\$'000
Livestock										
- Poultry	3	23	4	55	17	186	17	198	25	297
- Cattle
- Sheep
- Pigs	2	39	8	113	2	60	2	23	6	81
- Bees	2	4	1	1	1	3
Total Livestock	5	62	14	172	20	247	20	224	31	378
Fishing	26	122	20	130	21	124	27	156	18	158
Farm Development										
- 1-5 acres	104	480	93	491	93	386	72	898	137	730
- 6-10 acre	49	274	64	499	52	329	41	262
- 11+ acre	...	3	1	4
Total Farm Development	153	757	157	990	146	719	113	1160	137	730
Industry	1	3	1	5	1	2
Road Survey and Transport	10	358	...	37	4	18	2	12
Grand Total	184	941	202	1653	188	1132	165	1560	188	1278

Source : St. Lucia Development Bank

Table IV - 1. Banana Purchases and Exports

Period	Tonnes	
	Purchases 1/	Exports 2/
1987	99925	91595
1988	147131	136102
1989	127016	125593
1990	133562	131869
1991 1st Quarter	24663	24642
2nd Quarter	25645	25628
3rd Quarter	26529	26529
October	9743	9759
November	5880	5872
December	6920	6614
4th Quarter	22543	22245
Total 1991	99380	99044

Source : St. Lucia Banana Growers Association

1 - These are purchases made by SLBGA from the Buying Depots and Private Estates.

2 - These are sales to Geest by SLBGA

BANANA PURCHASES & EXPORTS

Fig. IV - 1

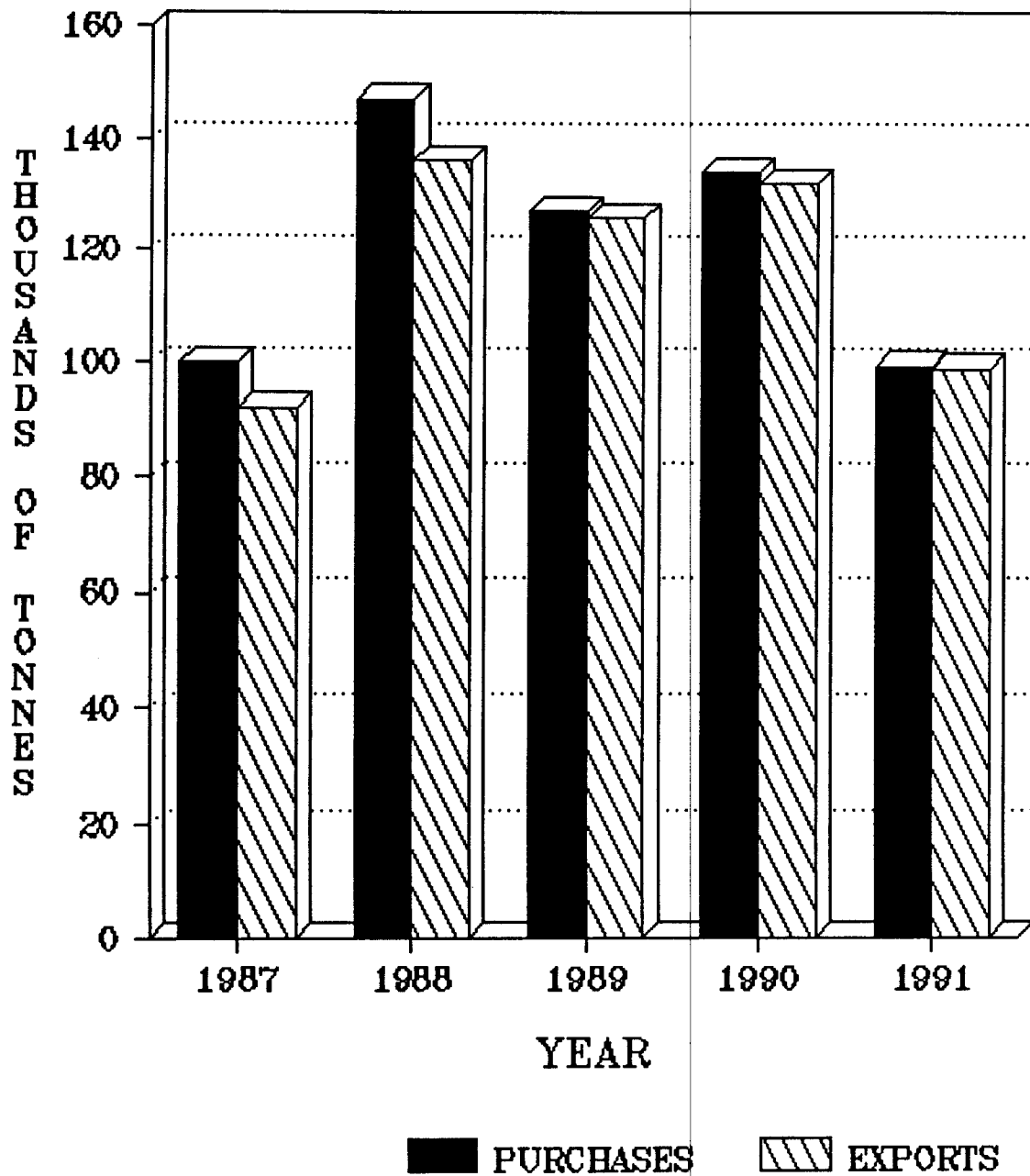


Table IV - 2. Banana Production by Boxing Depots

Buying Depots	Zone	1991							Total 1991	Total 1990
		1st Quarter	2nd Quarter	3rd Quarter	October	November	December	4th Quarter		
Fond Assau	A - 1	189	152	145	48	40	34	122	608	994
Forestierre	A - 2	89	101	114	48	35	23	106	410	467
Union	A - 3	--	--	--	--	--	--	--	--	96
Ti Rocher	A - 4	54	59	40	11	5	6	22	175	257
Deneriere Riviere	B - 1	333	369	281	96	76	52	224	1207	1307
Gadette	B - 2	263	247	216	77	56	37	170	896	1006
Grand Riviere	C - 1	930	838	697	244	190	139	573	3038	3973
Theobald	C - 2	123	171	189	65	48	31	144	627	446
Errard	C - 3	405	391	340	117	90	67	274	1410	1798
Troumassee	F - 1	596	591	409	204	148	113	465	2061	2057
Retraite	H - 1	214	191	145	68	58	49	175	725	1436
Belle Vue	H - 2	749	707	635	306	246	206	758	2849	3552
Banse	H - 3	390	342	285	133	113	90	336	1353	1729
Morne Cayenne	H - 4	488	340	184	79	70	71	220	1232	2349
Victoria	I - 1	19	--	--	--	--	--	--	19	440
Giraud	I - 2	--	--	--	--	--	--	--	--	360
Odsan	J - 1	229	284	343	127	87	59	273	1129	1852
Vanard	J - 2	322	400	506	187	147	94	428	1656	2250
Bexon	J - 3	122	135	167	55	39	28	122	546	747
Private Estates		19145	20341	21624	7886	6156	5508	19550	80660	106709
Total		24660	25659	26320	9751	7604	6607	23962	100601	133825

Source : St. Lucia Banana Growers Association

Table IV - 3. Banana Price Structure

Period	Average sterling price Value - E.C\$	Price (\$.C per kg)		
		Green Market Price 1/	Price Paid to SLBGA 2/	Price Paid to Producers 3/
1987	4.40	2.22	1.37	0.58
1988	4.77	2.37	1.37	0.55
1989	4.39	2.19	1.26	0.64
1990	4.81	2.52	1.40	0.65
1991 1st Quarter	5.09	2.60	1.41	0.68
2nd Quarter	4.55	2.81	1.69	0.83
3rd Quarter	4.53	2.59	1.49	0.77
October	4.62	2.39	1.36	0.74
November	4.76	2.23	1.32	0.68
December	4.94	2.41	1.36	0.61
4th Quarter	4.77	2.34	1.35	0.68
Average 1991	4.74	2.59	1.48	0.74

Source : St Lucia Banana Growers Association

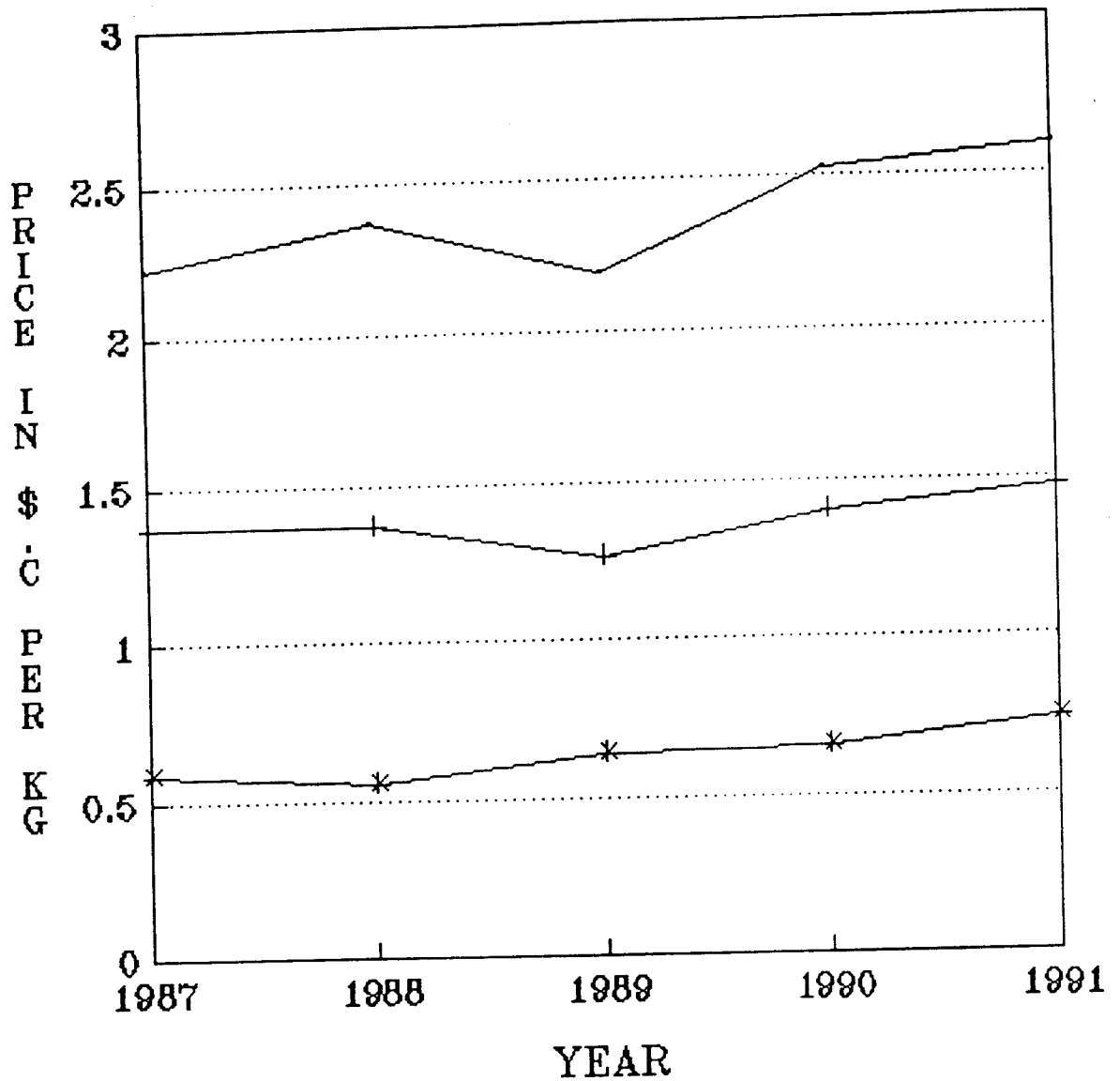
1 - Price paid by purchaser in the U.K. to Geest Industries for the Green Fruit

2 - Price paid by Geest Industries to SLBGA

3 - Price paid by SLBGA to the Banana Producers

BANANA PRICE STRUCTURE

Fig IV - 2



— G.M.P + SLBGA * PRODUCER

G.M.P - Means Green Market Price

Table IV - 4. Comparative Banana Exports by Quantity and Value - Windward Islands

Period	St. Lucia		St. Vincent		Dominica		Grenada	
	Tonnes	\$'000	Tonnes	\$'000	Tonnes	\$'000	Tonnes	\$'000
1987	80769	108550	35310	48606	61297	85104	8131	10987
1988	128120	176902	61850	84893	71477	99575	9130	12630
1989	125593	157717	65670	81680	50316	64813	8622	11010
1990	133793	186999	79568	110655	56621	85597	7487	10346
1991 1st Quarter	24644	35335	14959	21224	12601	18204	1399	1930
2nd Quarter	25660	42984	12785	21364	15462	25803	1838	55744
3rd Quarter	26319	38077	15457	22085	14312	20705	1747	57633
October	7692	10263	6444	8584	4445	5925	634	855
November	7693	9678	6281	7903	4141	5215	658	834
December	8593	10053	7156	8319	4296	5046	650	730
4th Quarter	23978	29994	19881	24806	12882	16186	1942	2419
Total 1991	100601	146390	63082	89479	55257	80898	6926	117726

Source : WINBAN

Table IV - 5. Price Range of Banana Inputs for 1991

Type of Inputs	Unit of Quantity	Price Range E.C. \$. C
Blue Diothene - Large	30 Kg roll	182.00 - 205.00
Blue Diothene - Treated	30 Kg roll	265.00
Blue Diothene - Small	15 Kg roll	90.00 - 111.00
FERTILIZERS =====		
Fertilizer N.P.K.	50 Kg Bag	45.00 - 51.00
Sulphate of Ammonia	50 Kg Bag	32.00
Triple Superphosphate	50 Kg Bag	84.00 - 86.00
Muriate of Potash	50 Kg Bag	49.00
Urea	50 Kg Bag	53.00 - 55.00
Dolomite Lime	50 Kg Bag	35.00
WEEDICIDES =====		
Daconate	Gallon	35.00
Dalapon	25 Kg Bag	341.00
Gesapax	5 Litre	83.00
Gramaxone	5 Litre	56.00 - 57.00
Gramaxone	1 Litre	12.00 - 13.00
Maloran	20 Kg BAG	879.00
Reglone	5 Litre	68.00 - 72.00
Reglone	1 Litre	16.00
Round Up	Gallon	169.00
Talent	3.5 Litre	91.00
INSECTICIDES =====		
Furadan	25 Kg Bag	168.00 - 193.00
Furadan	10 Kg Bag	73.00 - 78.00
Primicid	5 Litre	127.00 - 130.00
Vydate	Gallon	86.00
FUNGICIDES =====		
Mertect	1 Litre	225.00
Calixin	1 Litre	44.70

Source : St. Lucia Banana Growers Association

Table IV - 6. Imports of Fertilizer by Type, Quantity and Value

Period	Ammonium Nitrate		Ammonium Sulphate		Urea		Other Fertilizers	
	Tonnes	\$'000	Tonnes	\$'000	Tonnes	\$'000	Tonnes	\$'000
1987	7	17	2091	696	620	251	15233	8978
1988	16	34	4103	888	167	117	14051	9130
1989	2015	1206	1645	580	18	15	14054	9831
1990	797	512	1677	438	2497	147	16006	7423
1991 1st Quarter	18	26	1496	565	5	8	1146	1220
2nd Quarter	1201	988	1500	1573	3	20	1824	1928
3rd Quarter	129	357	--	--	275	247	1721	471
October	18	26	--	--	21	20	505	475
November	--	--	--	--	--	--	2	258
December	--	--	--	--	--	--	1176	926
4th Quarter	--	--	--	--	21	20	1683	1659
Total 1991	1366	1397	2996	2138	304	295	6374	5278

Source: Foreign Trade Report

Table V - 1. Copra Deliveries to Principal Purchaser

Period	Quantity (TONNES)	Value \$'000
1987	4254	4320
1988	3824	3787
1989	4354	4788
1990	5035	5539
1991 1st Quarter	1154	1269
2nd Quarter	1277	1405
3rd Quarter	--	--
October	565	373
November	403	266
December	586	387
4th Quarter	1554	1026
Total 1991	3985	3700

Source : St. Lucia Coconut Growers Association

COPRA PURCHASES BY PRINCIPAL PURCHASER

Fig. V - 1

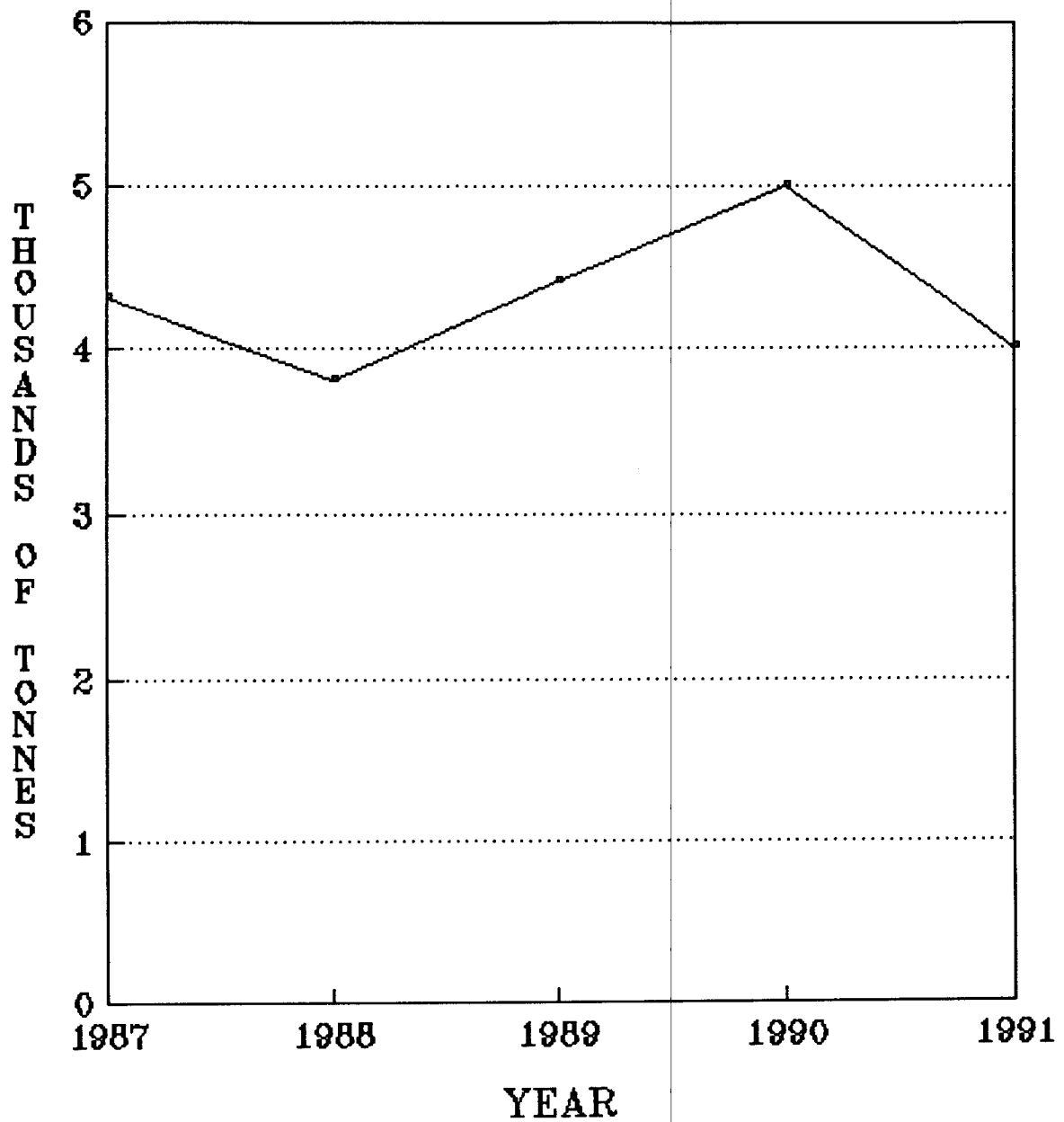


Table V - 2. Exports of Copra Products by Quantity and Value

Period	Coconut Oil				Laundry Soap		Coconut Meal		Total Value \$'000
	Refined		Unrefined		Quantity Tonnes	Value \$'000	Quantity Tonnes	Value \$'000	
	000 Litres	\$'000	000 Litres	\$'000					
1987	1184	3442	1739	3495	108	242	725	232	7411
1988	1193	3507	423	1129	20	32	567	155	4823
1989	2258	6705	1094	2045	174	164	1284	187	9101
1990	2793	8527	275	570	95	85	570	154	9336
1991 1st Quarter	—	—	346	716	—	—	146	59	775
2nd Quarter	303	357	236	256	—	—	231	62	675
3rd Quarter	2	9	37	83	1	3	—	—	95
October	—	—	—	—	—	—	3	1	1
November	—	—	—	—	—	—	63	18	18
December	—	—	—	—	—	—	—	—	0
4th Quarter	—	—	—	—	—	—	66	19	19
Total 1991	305	366	619	1055	1	3	443	140	1564

Source : Foreign Trade Report

Table V - 3. Purchases and Exports of Cocoa Beans

Period	Purchases by Principal Exporter (Tonnes)	Export		Average Price Paid to Producers \$.C/kg
		Quantity (Tonnes)	Value \$'000	
1987	44	55	378	6.29
1988	46	48	324	6.29
1989	33	60	223	6.05
1990	52	47	334	6.05
1991 1st Quarter	19	15	109	6.60
2nd Quarter	19	30	215	6.60
3rd Quarter	1	-	-	6.60
October	-	-	-	-
November	1	-	-	-
December	3	-	-	6.60
4th Quarter	4	-	-	6.60
Total 1991	43	45	324	6.60

Source : St. Lucia Agriculturist Association &
Foreign Trade Report

N.B. : Local Sales of Cocoa by the Association for the
years under review were negligible.

EXPORTS OF COCOA BEANS

Fig. V - 2

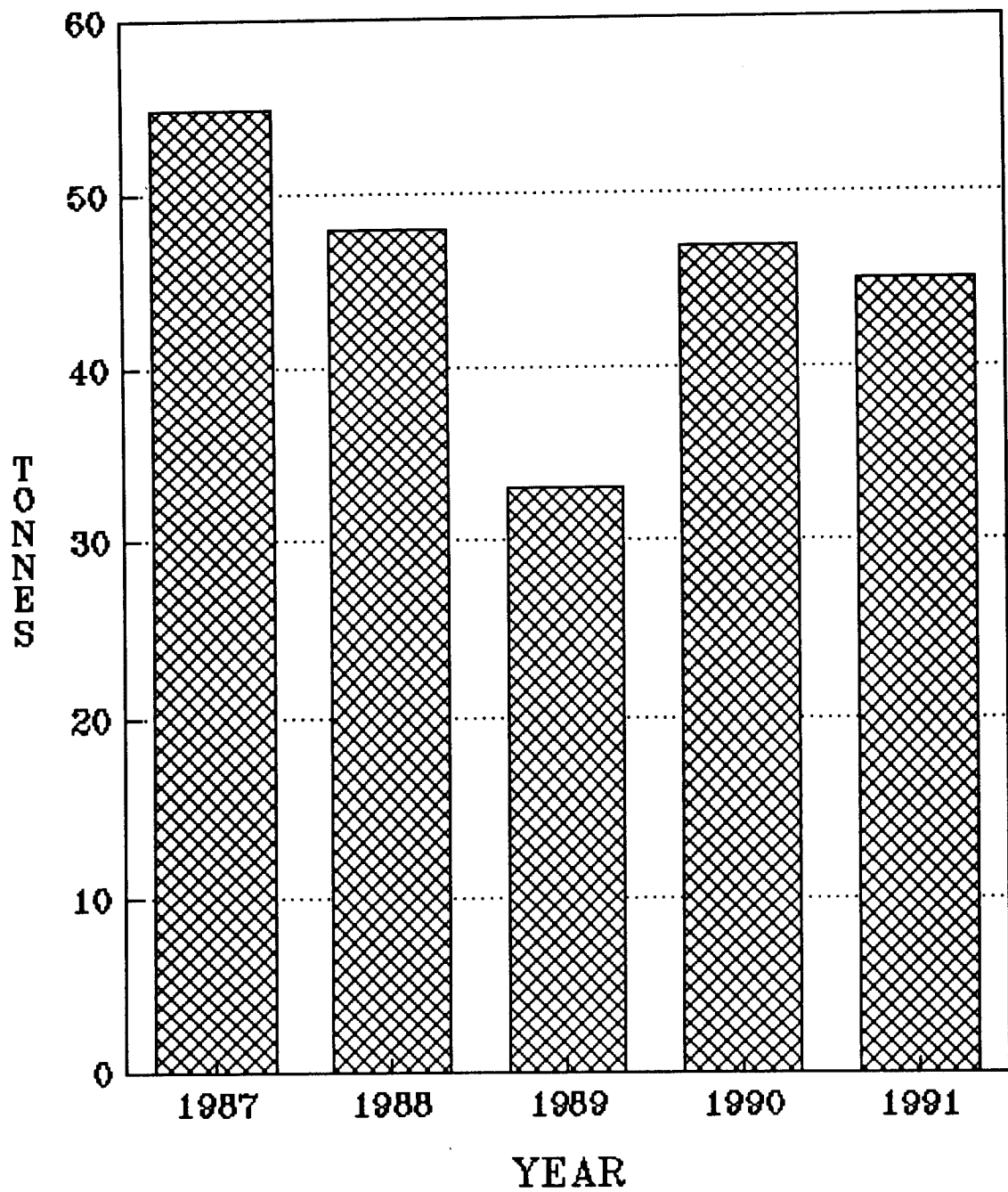


Table VI - 1. Total Quantity (kgs) of Selected Agricultural Produce Purchased by Selected Marketing Outlets

Produce	1987	1988	1989	1990	1991
Avocado	8777	21849	13922	13848	17178
Banana - Ripe	21441	45821	43567	38446	52517
Canteloupe	1087	3441	3523	6391	4954
Grapefruit	15957	30977	48875	92551	82642
Guava	6	35	...	26	...
Golden apple	2516	2422	7135	7986	2751
Lemons	1455	2126	3470	6730	3580
Limes	12602	13431	24405	24407	30564
Mango - Graham	9933	12490	11236	11309	13234
- Julie	10658	6711	6092	5737	3011
- Others	10029	4626	10072	15035	16260
Orange - Sour	1282	1596	1442	3166	4571
- Sweet	17980	46782	72721	75152	68791
Ortaniques	254	254	361	91	877
Passionfruit	46	181	1029	1296	2138
Paw Paw	1180	2221	1445	2212	1160
Pineapple	1379	2658	4805	7488	8974
Plum	52	118	810
Sapodilla	105	60	135	839	...
Shaddock	844	1110	232	785	501
Sour Sop	3732	3606	3767	4533	4786
Tangerine	2636	6319	7687	13531	15608
Water Melon	2149	7360	6535	11349	14433
Broccoli	521	587	391	210	...
Cabbage	19669	45769	62953	71735	78396
Calaloo	157	91	164	114	77
Carrot	6303	9932	20843	21796	12748
Cauliflower	364	170	...	53	...
Chinese Cabbage	956	2105	2906	2020	5447
Christophene	4200	10375	17300	22493	17537
Cucumber	32956	27810	37617	68665	75449
Eggplant	4712	3214	3699	7910	7552
Lettuce	9951	7884	12306	19919	21502
Okra	2991	2662	2872	4772	5824
Pigeon Peas	47	...	26	86	...
Pumpkin	13182	18723	27930	46544	44337
Radish	24	126	...	5	...
Salad Beans	10492	9016	13374	14141	20303
Spinach	800	398	1817	2648	4391
Squash	405	69	121	164	85
Sweet Pepper	4572	2629	6432	11483	16821
Seasoning Pepper	0	715	2850	3559	4753
Tomato	22155	29038	65983	66099	64476
Turnip	271	272	2101	1791	2136
Zucchini	193	176	1341	1349	4140

Continued Overleaf

Table VI - 1. Total Quantity (kgs) of Selected Agricultural Produce Purchased by Selected Marketing Outlets

Produce	1987	1988	1989	1990	1991
Celery	936	1030	1129	1880	2695
Chive	125	245	2402	1675	2235
Cinnamon	176	218	293	692	1279
Ginger	93	333	...	422	2831
Hot Pepper	137	96	105	243	23
Leek	3	28	12	21	36
Nutmeg	21	179	93
Parsley	360	595	1769	2066	3857
Thyme	26	99	322	184	508
Banana - green	6160	4381	3982	5810	22751
Banja	2008	3509	4219	4848	4914
Breadnut	68	41	2	13	17
Breadfruit	702	1640	2357	863	2874
Cush Cush	1525	907	1247	2185	2118
Dasheen	24653	45737	57818	83247	84596
Macambou	2458	3028	4117	3151	4365
Plantain	22037	45815	60552	94084	133109
Sweet Potato	21902	35142	33900	70949	35976
Tannia	799	1174	2995	3856	4674
Yam - Oriental	...	51	1200	1753	1406
- Portuguese	1322	7421	6979	8956	6244
- Red	42	26	132	134	25
- White	6169	2163	5620	6851	15924
- Yellow	5930	9547	12785	14790	19670
Coffee	1395	1126	1809	717	214
Dry Coconut (Nos)	2102	868	884	1195	1362
Peanuts	1902	252

Source : Leading Supermarkets and the St. Lucia Marketing Board

... - means that data was not available

Table VI - 2. Total Quantity (Kgs) of Selected Agricultural Produce Purchased by Selected Marketing Outlets - 1991

Produce	Jan	Feb	Mar	Apr	May	June	July	Aug	Sept	Oct	Nov	Dec	Total
Avocado	394	156	0	0	0	217	1725	3144	4516	3251	2177	1598	17178
Banana [ripe]	3468	3535	5107	5443	4582	5167	4372	5498	6212	6076	1438	1619	52517
Canteloupe	157	4	0	0	0	596	848	531	1822	782	172	42	4954
Golden apple	32	0	0	0	0	0	129	638	650	435	594	273	2751
Grapefruit	12393	14810	20157	8301	734	64	97	631	3524	6112	6753	9066	82642
Lemon	898	847	800	0	52	27	12	112	16	168	324	324	3580
Lime	220	192	371	1737	3107	2684	3368	3525	3965	4348	2960	4087	30564
Mango - Graham	0	0	0	145	1224	762	704	5402	1496	2629	872	0	13234
- Julie	0	20	0	0	1377	459	726	292	75	34	28	0	3011
- Others	1007	1025	538	1949	1914	1823	2268	2482	877	1284	214	879	16260
Orange [sour]	1047	842	562	266	168	0	15	0	62	99	698	812	4571
Orange [sweet]	7427	1651	129	102	156	151	1283	6160	10490	17073	14426	9743	68791
Ortanique	848	29	0	0	0	0	0	0	0	0	0	0	877
Passionfruit	162	13	0	20	151	109	77	50	273	448	396	439	2138
Paw Paw	28	14	110	92	199	241	120	116	68	76	42	54	1160
Pineapple	0	0	459	85	1002	1160	771	360	0	1730	940	2467	8974
Plum	0	0	0	0	0	0	0	43	23	90	59	0	215
Shaddock	191	0	26	0	35	0	0	0	83	91	75	0	501
Sour Sop	545	119	131	398	467	474	170	73	178	683	557	991	4786
Tangerine	4554	2214	196	10	0	0	0	84	579	1254	2921	3796	15608
Water Melon	639	339	604	213	203	252	2412	1750	2797	2980	1512	732	14433
Cabbage	6874	10956	12880	16020	8750	3043	940	4417	5027	4333	2898	2258	78396
Calaloo	4	2	0	0	14	2	5	8	8	11	12	11	77
Carrot	908	2197	1943	4006	1816	1264	118	31	0	168	201	96	12748
Chinese Cabbage	298	611	192	230	378	190	587	945	529	416	499	572	5447
Christophene	2650	2869	2993	1382	716	385	30	351	1616	1233	2267	1045	17537
Cucumber	8413	7353	3010	4197	5884	7900	5598	6140	5652	6896	5923	8483	75449
Eggplant	382	727	617	674	791	328	473	811	722	670	852	505	7552
Lettuce	2055	2149	2715	2045	2701	1910	2005	2175	736	681	989	1341	21502
Okra	201	94	249	288	622	123	79	244	607	1039	1174	1104	5824
Pepper - Seasoning	38	87	124	146	317	416	173	846	669	967	473	497	4753
- Sweet	127	528	1088	2331	2211	1781	2452	2829	1625	767	788	294	16821
Pumpkin	4077	5223	5028	4344	3333	2401	1484	2009	4343	3387	4618	4090	44337
Salad Beans	2745	2203	1491	2644	1610	1003	1632	2135	622	853	2099	1266	20303

Table VI - 2. Total Quantity (Kgs) of Selected Agricultural Produce Purchased by Selected Marketing Outlets - 1991

Produce	Jan	Feb	Mar	Apr	May	June	July	Aug	Sept	Oct	Nov	Dec	Total
Spinach	48	279	325	327	425	371	573	464	493	459	214	413	4391
Squash	0	0	39	0	0	40	6	0	0	0	0	0	85
Tomato	6998	14876	12905	11084	6569	1322	1151	3134	894	1167	1875	2501	64476
Turnip	134	544	545	739	78	0	0	0	57	0	0	39	2136
Zucchini	205	333	285	715	223	288	47	598	397	621	267	161	4140
Celery	370	341	201	328	180	128	68	113	123	160	226	457	2695
Chive	210	322	236	256	59	34	90	101	61	73	222	571	2235
Cinnamon	184	35	225	157	52	106	31	117	44	28	108	192	1279
Ginger	162	186	316	566	439	323	186	82	142	0	65	364	2831
Hot Pepper	0	0	23	0	0	0	0	0	0	0	0	0	23
Leek	3	3	0	2	2	0	0	3	2	3	4	14	36
Nutmeg	0	0	0	0	0	0	0	36	0	0	0	57	93
Parsley	330	471	241	388	357	336	466	344	176	315	267	166	3857
Thyme	24	25	34	51	27	34	40	68	69	70	42	24	508
Banana - Green	727	479	873	526	1304	884	3110	6307	2318	1636	3237	1350	22751
Banja	945	845	594	215	172	217	0	0	0	0	223	1703	4914
Breadfruit	170	74	5	555	314	95	131	874	308	99	170	79	2874
Breadnut	0	0	0	0	17	0	0	0	0	0	0	0	17
Cush Cush	260	199	1254	225	36	0	0	0	0	2	0	142	2118
Dasheen	6735	7416	7223	6470	6369	6406	6392	8869	5357	9818	8189	5352	84596
Macambou	144	277	205	530	589	669	433	434	502	381	56	145	4365
Plantain	6238	10824	12318	13232	11515	12193	11558	13803	12754	11843	9329	7502	133109
Sweet Potato	3647	4410	3435	3376	1220	920	1163	2532	435	1541	5690	7607	35976
Tannia	348	501	802	836	514	328	819	241	80	24	83	98	4674
Yams - Oriental	720	238	0	0	0	0	0	0	0	0	95	353	1406
Portuguese	163	29	34	0	0	0	0	2557	317	1573	728	843	6244
Red	18	0	7	0	0	0	0	0	0	0	0	0	25
White	4660	670	468	220	0	0	29	148	2771	2672	2041	2245	15924
Yellow	1431	3208	4173	3164	1787	2016	468	290	455	250	716	1712	19670
Coffee	0	11	44	38	0	0	51	5	40	13	4	8	214
Coconut - Dry (No)	184	32	209	50	178	136	163	115	39	85	81	90	1362

Source : Leading Supermarkets and the St. Lucia Marketing Board

Table VI - 3. Wholesale Prices of Agricultural Produce Purchased
by Leading Marketing Outlets - 1991

Produce	Jan	Feb	Mar	Apr	May	June	July	Aug	Sept	Oct	Nov	Dec
Avocado	2.11	2.25	0.00	0.00	0.00	4.40	2.46	1.70	1.56	1.30	1.96	2.14
Banana [ripe]	0.77	0.77	0.77	0.77	0.77	0.77	0.77	0.77	0.77	0.77	0.77	0.77
Canteloupe	4.00	4.41	0.00	0.00	0.00	4.40	4.41	4.00	2.90	4.90	2.61	3.31
Golden apple	0.88	0.00	0.00	0.00	0.00	0.00	0.88	0.78	0.49	0.48	0.51	0.51
Grapefruit	0.65	0.52	0.79	1.05	1.79	1.40	2.14	1.92	1.22	0.52	0.44	0.42
Lemon	0.77	0.90	1.18	0.00	1.32	1.76	1.65	1.10	1.10	0.66	0.66	0.66
Lime	5.44	6.30	5.31	4.30	3.26	2.62	2.67	2.14	2.04	1.71	1.43	1.56
Mango - Graham	0.00	0.00	0.00	0.94	0.99	1.03	1.00	0.71	0.72	1.04	0.98	0.00
- Julie	0.00	1.10	0.00	0.00	0.81	0.55	0.69	1.06	0.84	0.88	0.88	0.00
- Others	0.62	0.77	0.58	0.50	0.61	0.59	0.64	0.71	0.62	0.83	1.02	0.64
Orange [sour]	0.58	0.56	0.73	0.66	0.81	0.00	0.88	0.00	0.55	0.74	0.53	0.44
Orange [sweet]	1.68	1.79	1.89	2.20	2.20	2.20	2.31	2.21	1.45	0.84	0.86	0.87
Ortanique	1.10	0.00	1.10	0.00	0.00	0.00	0.00	0.00	0.00	0.00	0.00	0.00
Passionfruit	4.41	4.41	0.00	4.41	4.20	4.40	4.91	4.25	4.10	4.27	3.73	3.46
Paw Paw	1.34	1.41	1.54	1.43	1.65	1.65	1.73	1.65	1.65	1.61	1.21	1.46
Pineapple	0.00	0.00	3.70	3.70	3.77	3.41	3.66	4.03	0.00	3.98	4.06	3.79
Plum	0.00	0.00	0.00	0.00	0.00	0.00	0.00	2.20	2.20	2.20	2.20	0.00
Shaddock	0.22	0.00	0.55	0.00	0.33	0.00	0.00	0.00	0.44	0.44	0.44	0.00
Sour Sop	0.62	0.55	0.68	0.70	0.68	0.75	0.88	0.88	0.61	0.57	0.59	0.55
Tangerine	1.22	1.28	1.14	1.65	0.00	0.00	0.00	1.94	1.57	1.26	1.12	1.07
Water Melon	2.20	2.05	1.99	2.80	2.56	1.84	3.08	3.27	2.26	2.34	2.63	2.75
Cabbage	3.86	3.36	3.10	3.33	3.01	4.27	4.35	4.62	4.13	4.90	4.48	4.50
Calaloo	8.33	8.33	0.00	0.00	4.67	10.42	10.83	6.25	9.33	6.42	8.17	8.83
Carrot	3.58	3.82	4.03	4.21	2.64	3.99	3.48	3.45	0.00	4.37	4.20	3.91
Chinese Cabbage	2.02	1.84	1.63	2.29	2.20	2.20	2.20	1.80	1.75	2.20	2.20	2.20
Christophene	1.90	1.49	1.37	1.42	1.76	2.24	2.80	3.05	2.64	2.20	2.04	1.82
Cucumber	1.63	0.73	1.89	3.24	2.01	1.58	2.69	2.42	1.50	1.58	1.94	1.22
Eggplant	1.67	1.51	1.56	1.70	1.47	1.35	1.65	1.63	1.02	0.78	1.05	1.29
Lettuce	3.82	3.60	3.42	3.40	2.91	3.83	4.51	4.36	4.03	5.09	5.05	5.86
Okra	2.92	3.18	2.47	3.15	3.31	4.40	4.58	4.88	4.17	3.86	2.74	3.37
Pepper - Seasoning	6.98	8.36	7.92	8.18	5.16	2.82	6.31	3.97	2.62	2.91	3.73	5.24
- Sweet	5.29	5.36	5.63	5.09	3.99	2.34	4.99	4.18	3.74	4.37	4.86	5.07
Pumpkin	2.43	2.36	1.88	1.76	1.28	1.42	2.61	3.10	2.29	1.53	1.36	1.35
Salad Beans	2.65	2.23	3.77	2.70	1.99	3.65	4.77	3.90	3.73	4.42	3.70	3.26

Continued Overleaf

Table VI - 3. Wholesale Prices of Agricultural Produce Purchased by Leading Marketing Outlets - 1991

Produce	Jan	Feb	Mar	Apr	May	June	July	Aug	Sept	Oct	Nov	Dec
Spinach	3.23	3.49	3.65	3.57	2.37	3.30	3.29	3.10	3.31	3.26	3.32	3.31
Squash	0.00	0.00	3.30	0.00	0.00	2.90	1.65	0.00	0.00	0.00	0.00	0.00
Tomato	5.74	4.02	2.44	4.67	4.61	6.46	7.62	7.41	6.99	7.72	5.80	6.31
Turnip	2.20	2.04	2.06	1.92	1.80	0.00	0.00	0.00	2.20	0.00	0.00	2.20
Zucchini	4.32	3.89	4.85	3.80	3.56	4.22	4.41	4.03	3.37	3.12	2.69	3.73
Celery	11.17	8.67	10.83	8.33	10.50	11.67	14.17	14.33	15.83	15.50	15.83	14.50
Chive	15.14	19.83	13.50	15.50	16.00	17.67	17.17	18.67	22.17	19.00	19.83	10.41
Cinnamon	24.96	25.18	24.98	24.84	22.41	25.70	26.45	14.86	24.01	21.88	18.16	23.98
Ginger	1.76	2.20	2.06	1.72	1.74	1.65	2.20	2.08	2.20	0.00	1.65	2.26
Hot Pepper	0.00	0.00	2.20	0.00	0.00	0.00	0.00	0.00	0.00	0.00	0.00	0.00
Leek	12.50	12.50	0.00	12.50	12.50	0.00	0.00	12.50	12.50	26.00	12.50	14.33
Nutmeg	0.00	0.00	0.00	0.00	0.00	0.00	0.00	8.82	0.00	0.00	0.00	8.82
Parsley	10.00	7.67	7.17	8.00	9.00	10.67	11.00	10.33	12.50	15.17	15.67	14.17
Banana - Green	0.60	0.44	0.41	0.31	0.32	0.38	0.28	0.19	0.27	0.27	0.22	0.31
Banja	1.75	1.69	1.79	1.94	1.65	1.69	0.00	0.00	0.00	0.00	1.82	1.65
Breadfruit	1.10	1.19	5.00	0.73	0.60	1.02	1.22	0.77	0.86	1.64	1.35	1.22
Breadnut	0.00	0.00	0.00	0.00	0.77	0.00	0.00	0.00	0.00	0.00	0.00	0.00
Cush Cush	4.88	4.47	5.09	5.38	5.51	0.00	0.00	0.00	0.00	5.51	0.00	4.75
Dasheen	1.46	1.27	1.12	1.17	1.10	1.28	1.76	2.04	2.25	2.26	2.15	2.19
Macambou	0.59	0.37	0.63	0.71	0.62	0.53	0.62	0.71	0.71	0.73	0.66	0.67
Plantain	1.29	1.21	1.18	0.94	0.86	0.80	0.98	1.04	0.97	1.11	1.41	1.28
Sweet Potato	2.08	2.02	1.94	2.19	2.10	1.86	2.33	2.40	2.54	2.26	2.25	2.20
Tannia	3.10	2.76	3.16	3.22	3.19	2.77	3.28	3.12	3.31	3.31	3.30	3.17
Yams - Oriental	3.31	3.31	0.00	0.00	0.00	0.00	0.00	0.00	0.00	0.00	3.30	3.31
Portuguese	3.31	2.20	2.42	0.00	0.00	0.00	0.00	4.30	3.74	3.30	3.22	3.31
Red	3.31	0.00	1.65	0.00	0.00	0.00	0.00	0.00	0.00	0.00	0.00	0.00
White	2.21	2.78	2.57	3.64	0.00	0.00	3.30	1.48	3.77	3.32	3.30	3.37
Yellow	4.35	3.98	3.86	3.83	3.43	4.09	4.37	4.83	4.72	4.81	4.74	4.47
Coffee	0.00	13.23	13.22	38.00	0.00	0.00	11.54	13.23	13.23	9.92	13.23	10.75
Coconut - Dry (No)	0.21	0.25	0.21	0.20	0.24	0.23	0.20	0.20	0.26	0.23	0.25	0.25

Source : Leading Supermarkets and the St. Lucia Marketing Board

Table VII - 1. Milk Production

Period	Quantity Litres	Value E.C.\$
1987	128020	332852
1988	109887	285706
1989	197623	513820
1990	219900	571740
1991 1st Quarter	72106	187476
2nd Quarter	108141	281167
3rd Quarter	68703	178628
October	19216	49962
November	20923	54399
December	25570	66482
4th Quarter	65709	170843
Total 1991	314659	818114

Source : Livestock Development Project.
Beausejour, Vieux Fort

Table VII - 2. Estimated livestock Slaughtered by Type of Stock

Stock Type	NUMBER OF HEADS				
	1987	1988	1989	1990	1991
CATTLE *	1674	2533	1999	1642	1357
SHEEP/GOAT *	248	258	224	364	373
PIGS *	850	2304	1556	1923	1826
POULTRY	37090	88804	24607	209393	222232

Source : Ministry of Health & STAFCO

* - Figures are of carcasses inspected by the Public Health Department and the Castries City Council Health Department

MILK PRODUCTION

Fig. VII - 1

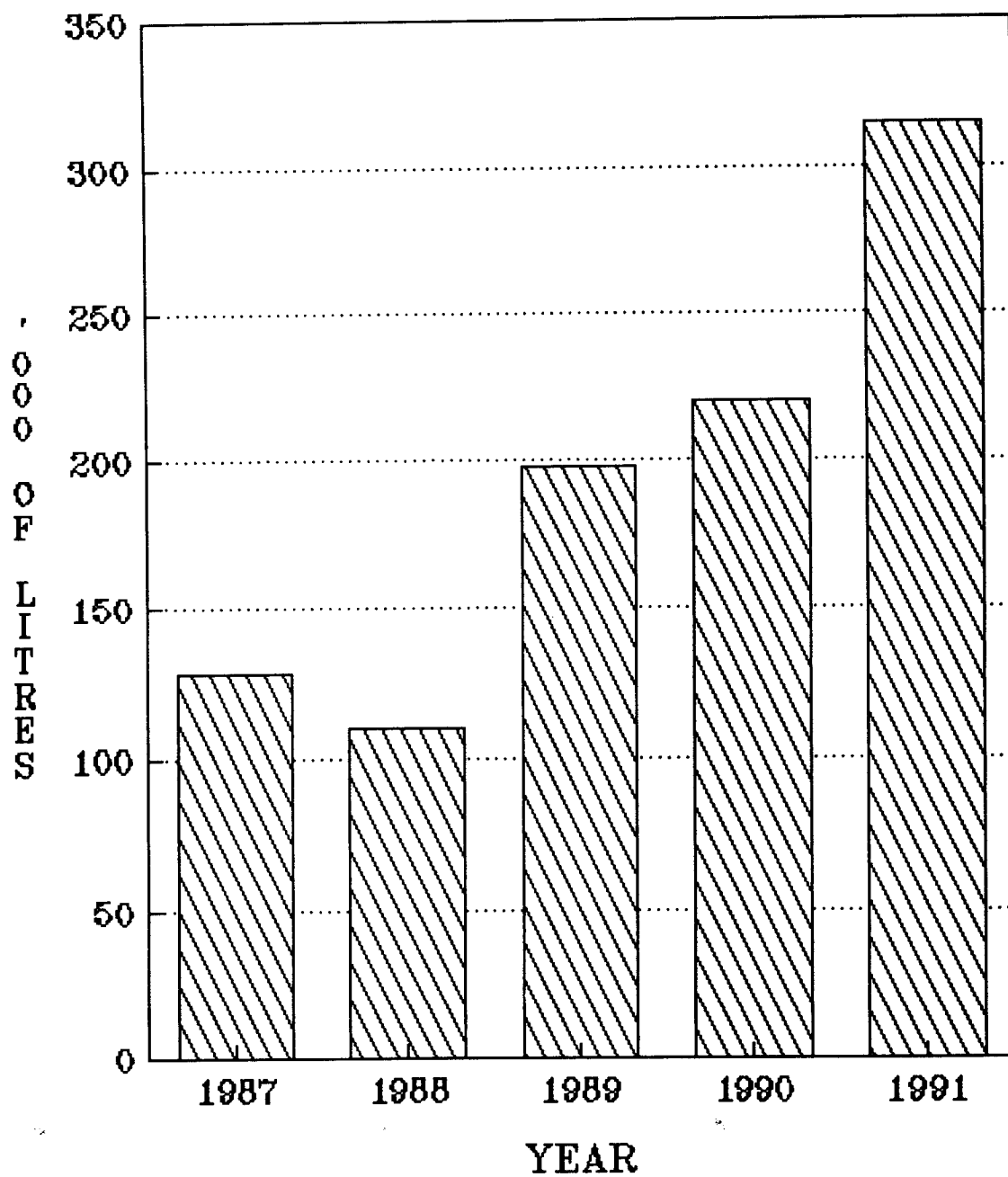


Table VII - 3. Table Egg Production and Imports

Period	Average Laying Stock on Farm 000 Hens	Local Production		Imports		Available Supply 1/	
		Quantity 000 Dozen Eggs	Producer Value \$'000	Quantity 000 Dozen Eggs	Value \$'000	Quantity 000 Dozen Eggs	Value \$'000
1987 *	25	454	1907	108	302	562	2209
1988	26	249	1058	143	398	392	1456
1989	32	581	2760	30	161	611	2921
1990	35	609	3045	33	135	642	3180
1991 1st Quarter	33	131	655	17	92	148	747
2nd Quarter	29	120	600	11	59	131	659
3rd Quarter	26	104	520	29	164	133	684
October	28	32	160	5	22	37	182
November	30	37	185	11	55	48	240
December	31	42	210	23	129	65	339
4th Quarter	30	111	555	39	206	150	761
Total 1991	29	466	2330	96	521	562	2851

Source : Livestock Department - Ministry of Agriculture & Foreign Trade Report

1 - Available Supply equals production plus imports

* - Means data was not available for the months of August and September.

TABLE EGG PRODUCTION

Fig. VII - 2

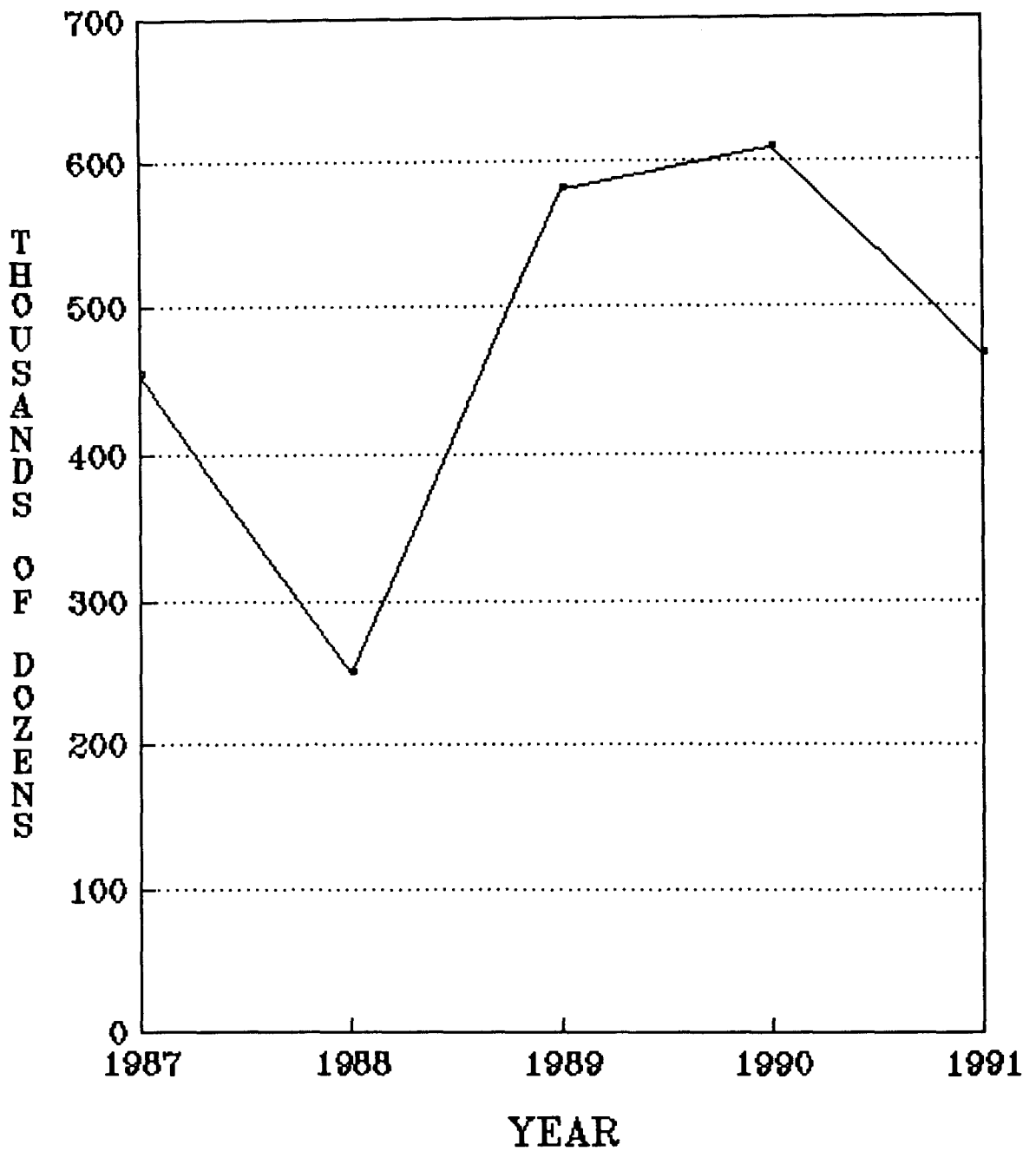


Table VII - 4. Imports of Feed by Type, Quantity and Value

Period	Total		Poultry		Cattle		Pig	
	Tonnes	\$'000	Tonnes	\$'000	Tonnes	\$'000	Tonnes	\$'000
1987	475	440	391	370	18	15	66	55
1988	707	600	577	504	97	52	33	44
1989	1067	991	966	883	52	39	49	69
1990	5292	1407	4439	1214	144	139	709	54
1991 1st Quarter	494	575	405	491	58	54	31	30
2nd Quarter	668	596	568	509	60	57	40	30
3rd Quarter	635	579	509	496	84	50	42	33
October	189	206	141	148	23	46	25	12
November	131	116	110	99	12	11	9	6
December	325	222	288	189	20	17	17	16
4th Quarter	645	544	539	436	55	74	51	34
Total 1991	2442	2294	2021	1932	257	235	164	127

Source : Foreign Trade Report

Table VII - 5. Imports of Poultry Parts by Type, Quantity and Value

Period	POULTRY							
	Total		Whole		Necks, Backs & Wing		Other Parts	
	Tonnes	\$'000	Tonnes	\$'000	Tonnes	\$'000	Tonnes	\$'000
1987	5587	13449	53	273	1810	3443	3724	9733
1988	5899	14357	64	322	1924	3455	3911	10580
1989	6085	19547	81	410	2200	5263	3804	13874
1990	6085	20350	60	350	2202	4984	3788	15016
1991 1st Quarter	1554	5435	40	178	695	1586	819	3671
2nd Quarter	1607	4839	11	56	613	1475	983	3308
3rd Quarter	1889	6312	29	156	844	1934	1016	4222
October	625	1945	24	108	272	613	329	1224
November	497	1832	18	102	160	423	319	1307
December	568	1967	24	138	232	556	312	1273
4th Quarter	1690	5744	66	348	664	1592	960	3804
Total 1991	6740	22330	146	738	2816	6587	3778	15005

Source : Foreign Trade Report

Table VII - 6. Imports of Meat 1/ by Type, Quantity and Value

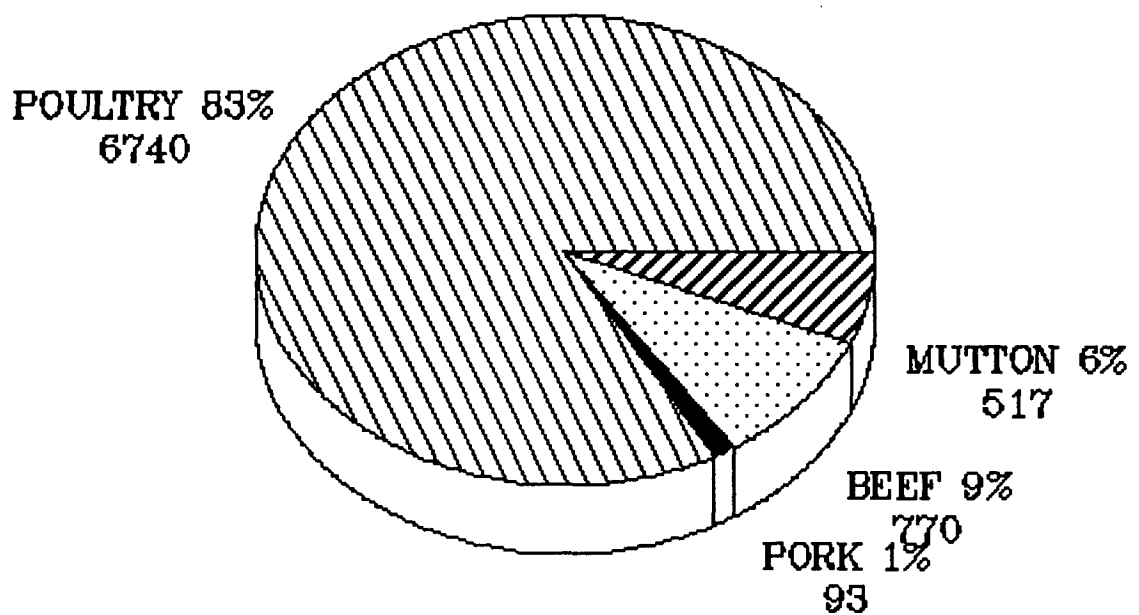
Period	Beef		Pork		Mutton of sheep		Mutton of Goat	
	Tonnes	\$'000	Tonnes	\$'000	Tonnes	\$'000	Tonnes	\$'000
1987	654	5489	2	20	191	910	22	23
1988	666	5767	7	41	272	1361	22	80
1989	1003	7986	38	318	279	1427	47	263
1990	760	7251	78	572	243	1459	317	1825
1991 1st Quarter	129	1296	12	114	74	456	62	383
2nd Quarter	232	2162	12	146	65	428	59	366
3rd Quarter	190	1737	31	247	77	523	108	665
October	100	901	16	120	26	174	13	79
November	39	413	19	136	26	213	4	11
December	80	746	3	33	3	29	--	--
4th Quarter	219	2060	38	289	55	416	17	90
Total 1991	770	7255	93	796	271	1823	246	1504

Source : Foreign Trade Report

1 - Frozen and/or Chilled

IMPORTS OF MEATS – 1991 QUANTITY (TONNES)

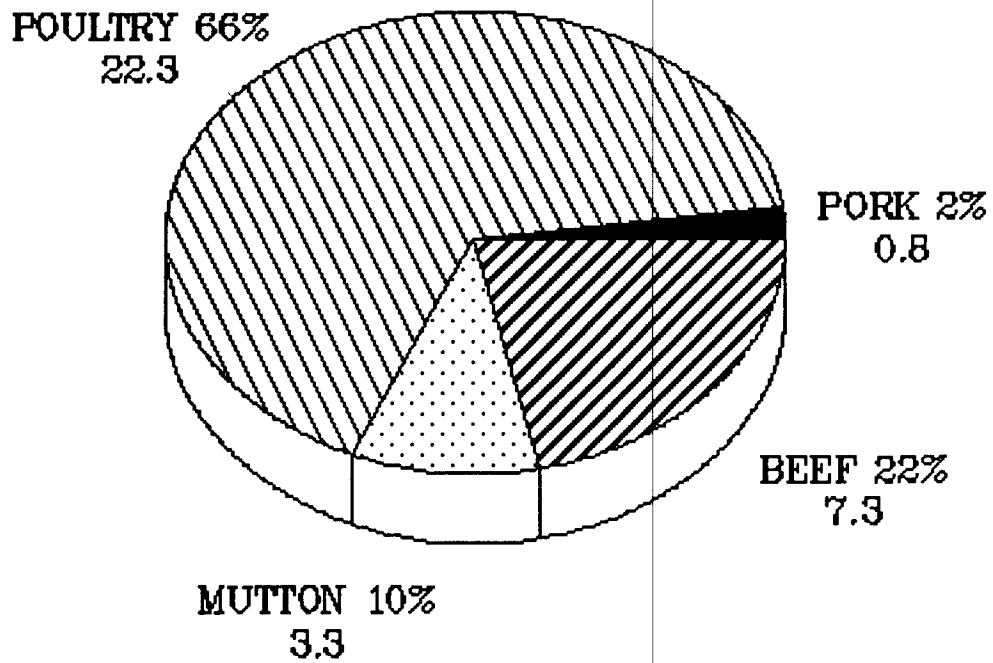
Fig. VII – 3



Mutton here includes both Sheep and Goat

IMPORTS OF MEATS - 1991 VALUE (\$'MILLIONS)

Fig. VII - 4



Mutton here includes both Sheep and Goat

Table VII - 7. Imports of Selected Livestock Products

Period	Milk		Cheese		Butter/Butterfat	
	Tonnes	\$'000	Tonnes	\$'000	Tonnes	\$'000
1987	2250	7288	406	2214	195	975
1988	2762	10240	398	2919	192	1072
1989	2577	10357	432	3450	279	1801
1990	3006	12208	651	4116	252	1709
1991 1st Quarter	609	3047	122	1011	55	391
2nd Quarter	673	2722	136	1013	54	386
3rd Quarter	654	2505	154	1067	70	438
October	156	684	49	409	17	105
November	370	1630	56	426	24	154
December	212	918	37	281	19	125
4th Quarter	738	3232	142	1116	60	384
Total 1991	2674	11506	554	4207	239	1599

Source : Foreign Trade Report

Table VIII - 1. Trade Balance on Food

Period	EXPORTS \$'000			IMPORTS \$'000			Trade Balance On Food
	Domestic Export (1)	Food Export (2)	2 as a % of 1 (3)	Total Imports (4)	Food Imports (5)	5 as a % of 4 (6)	
1987	207021	125031	60	483369	97363	20	27668
1988	300012	191442	64	595056	105445	18	85997
1989	279143	168241	60	741740	134938	18	33303
1990	312808	194468	62	730317	140093	19	54375
1991 1st Quarter	66102	38952	59	184209	37396	20	1556
2nd Quarter	74442	48346	65	191564	37364	20	10982
3rd Quarter	64891	37518	58	218264	41667	19	-4149
October	16647	7928	48	81447	13615	17	-5687
November	18417	11259	61	65023	13589	21	-2330
December	18295	9275	51	61192	14376	23	-5101
4th Quarter	53359	28462	53	207662	41580	20	-13118
Total 1991	258794	153278	59	801699	158007	20	-4729

Source : Foreign Trade Report

FOOD IMPORTS & EXPORTS

Fig. VIII - 1

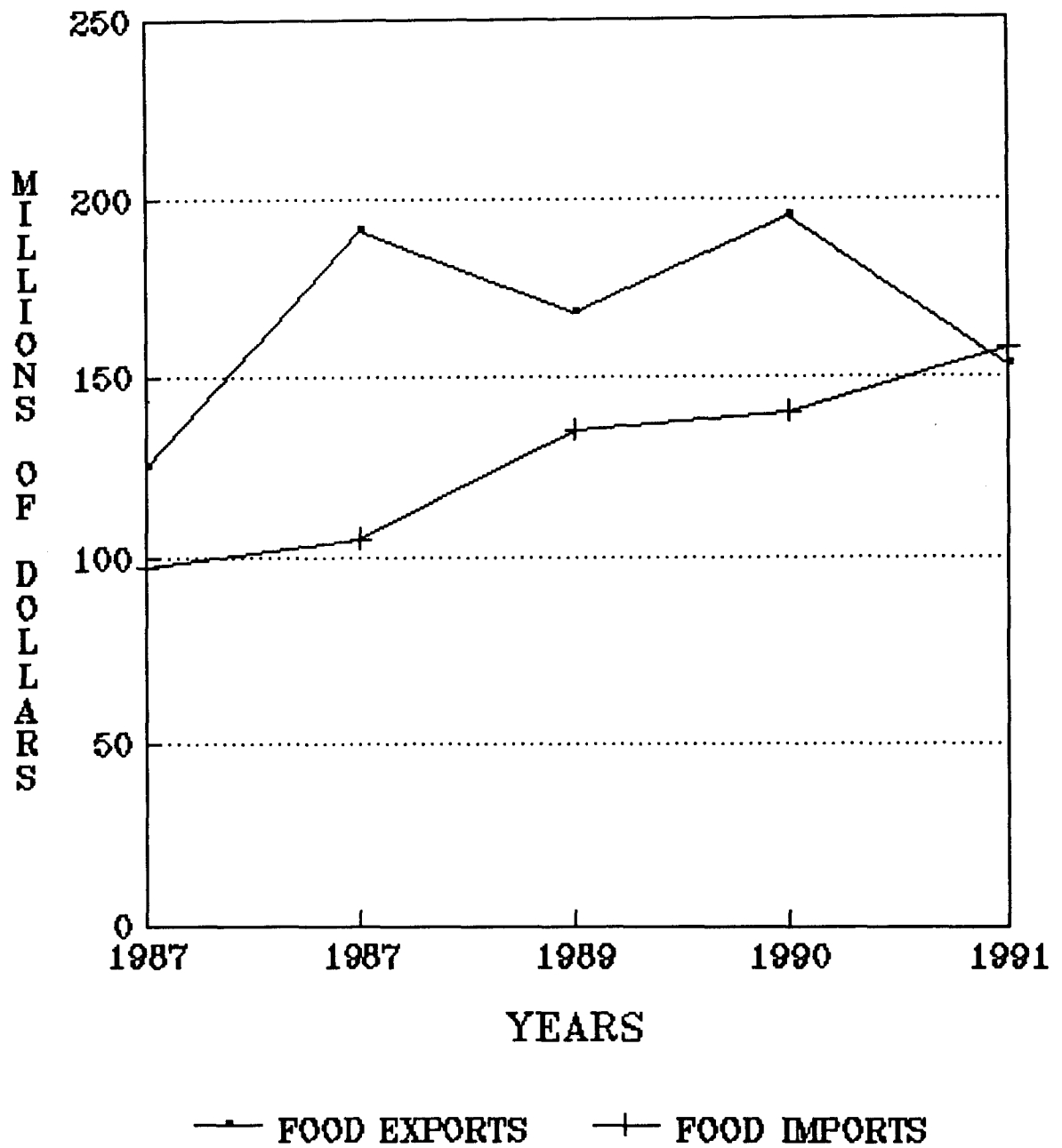


Table VIII - 2. Comparison of Exports of Selected Agricultural Produce

Produce	1987		1988		1989		1990		1991	
	Tonnes	\$'000	Tonnes	\$'000	Tonnes	\$'000	Tonnes	\$'000	Tonnes	\$'000
Avocado	15	34	10	18	10	24	13	14	14	19
Grapefruit	41	27	31	27	24	15	15	12	27	36
Mango	443	512	572	811	460	558	451	498	657	579
Sweet Orange	20	20	12	13	26	31	14	25	17	32
Breadfruit	944	975	841	920	1167	1073	675	642	982	1024
Plantain	210	187	208	195	176	184	164	248	189	244
Aroids 1/	26	32	2	3	15	34	9	15	1	1
Sweet Potato	1	2	14	24	11	13	79	147	39	55
Yam	6	10	9	12	1	2	3	11	1	2
Pumpkin	38	48	26	32	8	12	5	8	2	3
Other Fruits	110	128	79	104	65	58	75	108	35*	47
Sub Total 2/	1854	1975	1804	2159	1963	2004	1503	1728	1964	2042
Banana 3/	6974	9558	33287	22194	15446	20252	13886	19847	12261	18750
Total	8828	11533	35091	24353	17409	22256	15389	21575	14225	20792

Source : Foreign Trade Report

1 - Aroids here are dasheen, tannia and eddoes.

2 - Total amount of non-traditional crops exported.

3 - Exports to other territories excluding the United Kingdom

* - In 1991, some crops previously classified under this category were reported individually.

Table VIII - 3. Exports of Selected Agricultural Produce by Quantity and Value (1991)

Produce	1st Quarter		2nd Quarter		3rd Quarter		4th Quarter		Total 1991	
	Tonnes	\$'000	Tonnes	\$'000	Tonnes	\$'000	Tonnes	\$'000	Tonnes	\$'000
Avocado	5	8	8	9	13	17
Grapefruit	10	7	2	1	1	2	13	26	26	36
Mangoes	61	48	258	231	258	229	80	71	657	579
Sweet Oranges	7	9	1	1	1	2	8	20	17	32
Breadfruit	75	70	288	332	311	310	308	312	982	1024
Plantain	41	54	61	77	46	56	41	58	189	245
Aroids 1/
Sweet Potato	33	47	6	8	39	55
Yams	1	2	1	2
Pumpkin	1	2	1	2
Other Fruits	11	21	16	19	8	7	35*	47
Sub Total 2/	228	237	621	663	638	626	473	513	1960	2039
Banana 3/	2716	3733	3721	6465	2927	4521	2897	4031	12261	18750
Total	2944	3970	4342	7128	3565	5147	3370	4544	14221	20789

Source : Foreign Trade Report

Note that the totals here are slightly different to the totals of 1991 in the previous table (VIII - 2) due to rounding off of the figures.

1 - Aroids here are dasheen, tannia and eddoes

2 - Total amount of non-traditional crops exported.

3 - Exports to other territories excluding the United Kingdom

* - In 1991, some crops previously classified under this category were reported individually.

Table VIII - 4. Ginger Purchases and Exports

Period	Purchases by SLMB		Total Exports		Average producer Price/kg
	Quantity (KGS)	Value E.C\$	Quantity (KGS)	Value E.C\$	
1987	102599 /1	133463	93183	164365	1.16
1988	58349 /2	58536	30077	34609	0.88
1989	38512 /3	50743	20341	51779	1.38
1990	45182 /4	61980	55747	81514	1.37
1991 1st Quarter	42605 /5	61112	22901	69228	--
2nd Quarter	--	--	10733	25376	--
3rd Quarter	--	--	--	--	--
October	--	--	--	--	--
November	--	--	--	--	--
December	--	--	17	14	--
4th Quarter	--	--	17	14	--
Total 1991	42605	61112	33651	94618	1.43

Source : Foreign Trade Report and St. Lucia Marketing Board

- 1 - Consists of approximately 77% grade 1 and 23% grade 2; with price of \$1.43 cents perkg for grade 1 and \$0.88 cents per kg for grade 2.
- 2 - Consists of approximately 78% grade 1 and 22% grade 2; with price of \$1.10 cents perkg for grade 1 and \$0.66 cents per kg for grade 2.
- 3 - Consists of approximately 77% grade 1 and 23% grade 2; with price of \$1.47 cents perkg for grade 1 and \$0.81 cents per kg for grade 2.
- 4 - Consists of approximately 78% grade 1 and 22% grade 2; with price of \$1.54 cents perkg for grade 1 and \$0.77 cents per kg for grade 2.
- 5 - Consists of approximately 84% grade 1 and 16% grade 2; with price of \$1.54 cents perkg for grade 1 and \$0.88 cents per kg for grade 2.

GINGER PURCHASES

Fig. VIII - 2.

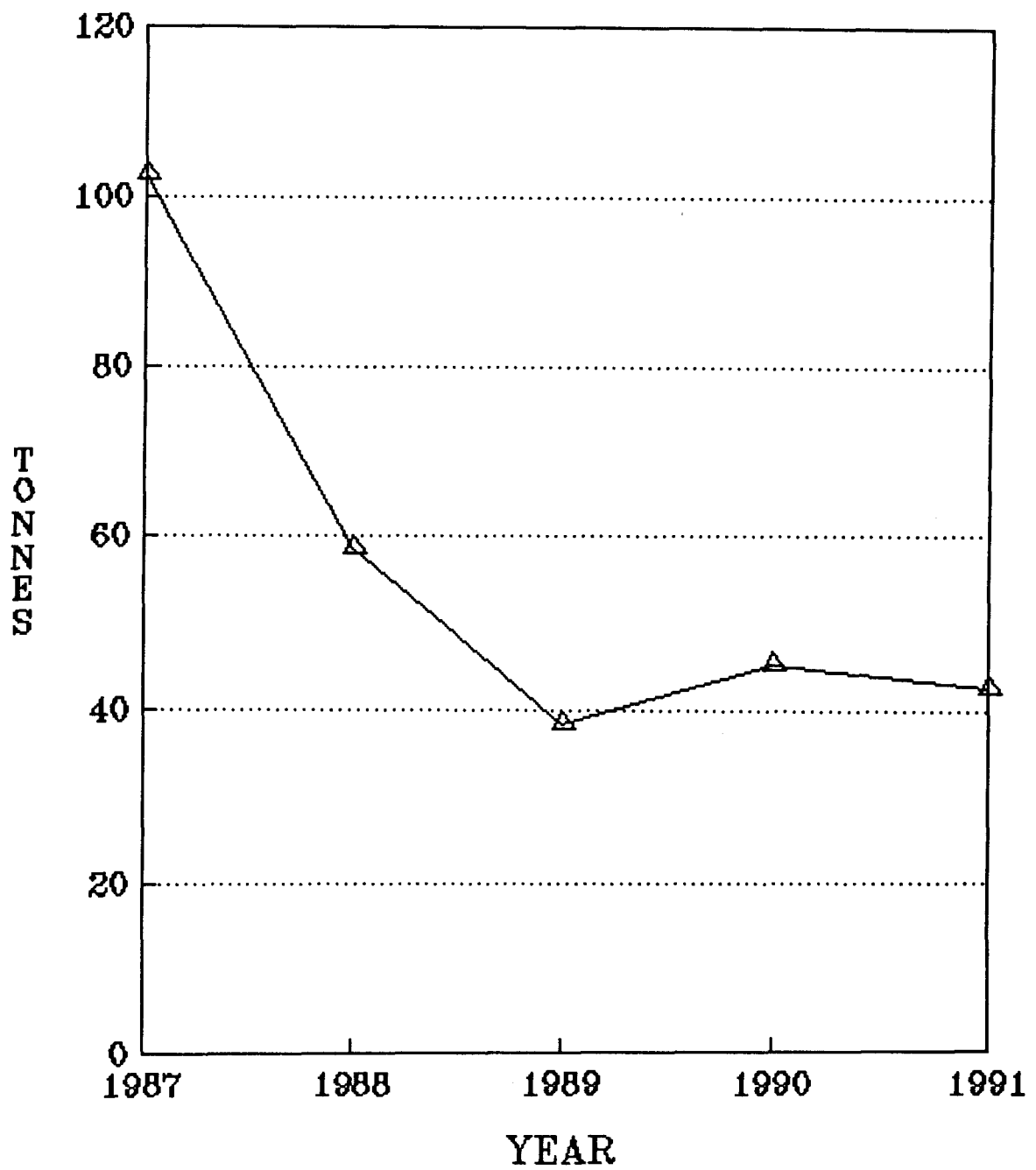


Table VIII - 5. Comparison of Imports of Selected Agricultural Produce (1987 - 1991)
(Quantity and Value)

Produce	1987		1988		1989		1990		1991	
	Tonnes	\$'000	Tonnes	\$'000	Tonnes	\$'000	Tonnes	\$'000	Tonnes	\$'000
Rice	2472	2576	2897	4069	2734	3502	2061	3146	2186	3770
Irish Potato	1266	1309	1132	1310	1332	1528	1234	1804	967	1320
Carrot	153	242	217	368	240	425	197	379	220	585
Cabbage	114	175	131	184	189	255	146	217	141	295
Tomato	136	517	133	556	150	490	106	448	115	495
Sweet Pepper	16	55	20	69	32	119	14	71	11	46
Garlic	76	358	86	360	85	501	86	594	99	594
Onion	669	894	786	1063	787	1030	812	1211	794	1182
Black Eye Peas	64	195	69	182	96	270	63	193	76	219
Pigeon Peas	13	26	9	30	12	40	10	42	12	59
Red Kidney Beans	144	415	137	377	141	592	131	445	212	514
Other Legumes	544	1055	399	802	593	1368	472	1091	556	1427
Apples	218	574	258	565	254	589	205	529	166	454
Grapes	38	198	52	269	79	380	51	294	67	404
Pineapple	35	70	...	1	44	95	38	77	21	69
Total	5958	8659	6326	10205	6768	11184	5626	10541	5643	11433

Source : Foreign Trade Report

IMPORTS OF SELECTED VEGETABLES

Fig. VII - 2

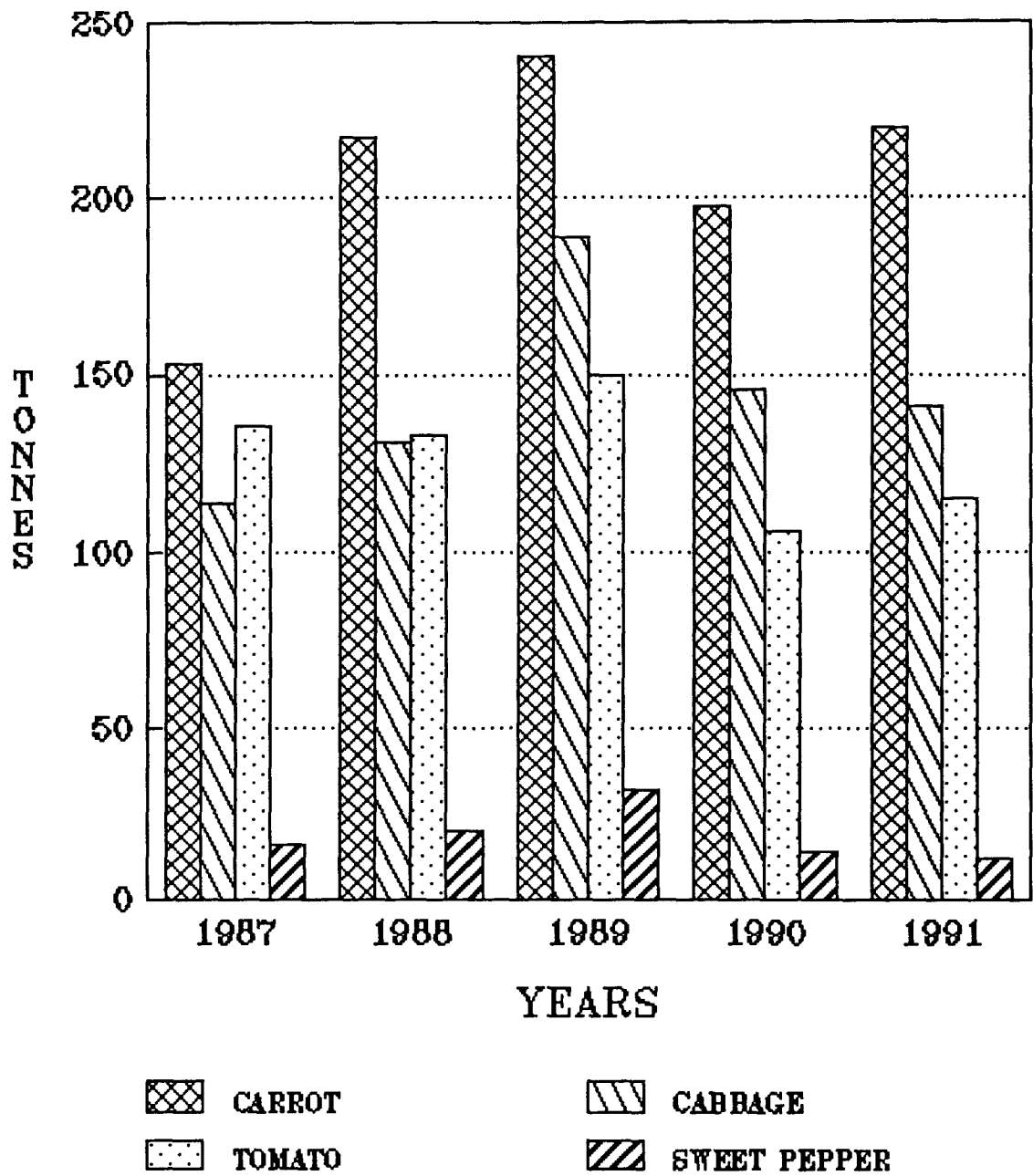


Table VIII - 6. Imports of Selected Agricultural Produce by Quantity and Value (1991)

- 51 -

Produce	1st Quarter		2nd Quarter		3rd Quarter		4th Quarter		Total 1991*	
	Tonnes	\$'000	Tonnes	\$'000	Tonnes	\$'000	Tonnes	\$'000	Tonnes	\$'000
Rice	529	937	422	753	429	906	806	1173	2186	3769
Irish Potato	265	393	285	321	139	232	279	372	968	1318
Carrot	53	159	38	122	62	154	67	150	220	585
Cabbage	29	47	16	21	56	137	39	90	140	295
Tomato	39	140	7	44	29	136	39	176	114	496
Sweet Pepper	9	27	2	12	...	2	1	3	12	44
Garlic	21	145	52	301	3	12	24	136	100	594
Onion	175	260	223	301	164	296	230	325	792	1182
Black Eye Peas	26	64	9	30	18	54	23	70	76	218
Pigeon Peas	1	8	5	21	4	19	3	11	13	59
Red Kidney Beans	49	126	64	99	46	124	54	165	213	514
Other Legumes	130	325	113	328	122	313	190	460	555	1426
Apples	58	147	31	89	24	85	53	132	166	453
Grapes	22	123	15	106	10	64	19	110	66	403
Pineapple	6	18	9	32	2	13	3	6	20	69
Total	1412	2919	1291	2580	1108	2547	1830	3379	5641	11425

Source : Foreign Trade Report

* - Means that the totals here are slightly different to the totals of 1991 in the previous table (VIII - 5) due to rounding off of figures

Table VIII - 7. Composition of Food Import

Item	1987		1988		1989		1990		1991	
	\$'000	%	\$'000	%	\$'000	%	\$'000	%	\$'000	%
Live Animals	128	...	40	...	545	...	179	...	185	...
Meat & Meat Preparation	27435	28	28691	26	39266	30	40275	30	45093	29
Dairy Products and Eggs	10897	11	14883	14	16073	12	18654	12	18715	12
Fish & Fish Preparation	5459	6	6237	6	7533	6	7045	6	8873	6
Cereal & Cereal Preparation	22601	23	26962	25	29476	22	31075	22	32283	20
Vegetables and Fruits	13966	14	15045	14	19012	14	19428	14	21790	14
Sugar Preparation & Honey	6480	7	6353	5	9422	6	10663	6	10269	6
Coffee, Tea, Cocoa & Spices	2759	3	2802	3	3336	3	3449	3	4116	3
Feeding Stuff for Animals	1900	2	1385	1	1956	1	2368	1	3167	2
Miscellaneous Food Preparation	5662	6	6455	6	8319	6	9114	6	13623	9
Total	97287	100	108853	100	134938	100	142250	100	158114	100

Source : Foreign Trade Report

Table IX - 1. Estimated Summary of Fish Landed
by Landing Site and Quantity

Landing Sites	T O N N E S				
	1987	1988	1989	1990	1991
Gros Islet	8	8	7	4	46
Castries	67	57 *	109 *	46	95
Anse la Raye	2	4 *	4 *
Canaries	...	12 *	12
Soufriere	1	17	52	49	188
Choiseul	23	21	35	38	57
Laborie	13	22	10	1	22
Vieux - Fort ^{1/}	111	99	114	282	337
Micoud	11	4	9	5	24
Praslin	4	5	11	6	54
Dennerie	89	133	79	123	218
Total	329	382	442	554	1039

Source : Fisheries Management Unit, M.O.A

1/ - Note that the data for the Landing Site Vieux Fort includes data from the Landing Site at Savannes Bay

* - means estimated figures

Table IX - 2. Summary of Fish Landed by Type and Quantity

Year	Type of Fish (Tonnes)							Total
	Tuna	Dolphin	King Fish	Flying Fish	Shark/Black Fish	Lobster	Other	
1987 *	75	61	29	31	4	...	129	329
1988	111	72	24	37	3	2	133	382
1989	100	71	21	81	4	1	164	442
1990	127	240	55	34	1	...	97	554
1991 1/	226	257	79	47	430	1039

Source: Fisheries Management Unit - Ministry of Agriculture

* - Means that estimated figures are included in the total

1/ - Means that data for Shark/Blackfish and Lobster are included in the Others column.

*

Table VIII - 3. Fish Exports

Period	Quantity (Tonnes)	Value \$'000
1987	37	285
1988	35	326
1989	4	39
1990	21	207
1991 1st Quarter	3	40
2nd Quarter	11	84
3rd Quarter	--	--
October	--	--
November	--	--
December	--	--
4th Quarter	--	--
Total 1991	14	124

Source : Foreign Trade Report

* means fresh and or chilled

Table IX - 4. Fish Imports (1987 - 1991) R

Period	CATEGORY							
	Total		Fresh & Chilled		Canned		Other 1/	
	Tonnes	\$'000	Tonnes	\$'000	Tonnes	\$'000	Tonnes	\$'000
1987	611	4705	32	238	389	2744	190	1723
1988	652	5090	154	918	267	2215	231	1957
1989	824	6351	120	685	368	2938	336	2728
1990	767	5773	209	991	240	1793	318	2989
1991 1st Quarter	180	1769	36	244	44	392	100	1133
2nd Quarter	182	1675	10	105	112	710	60	860
3rd Quarter	167	1609	35	229	60	585	72	795
4th Quarter	368	2271	64	394	238	1021	66	856
Total 1991	897	7324	145	972	454	2708	298	3644

Source : Foreign Trade Report

1 - Salted, smoked etc.

FISH PRODUCTION, IMPORT & EXPORT 1987 - 1991

Fig. IX - 1

